

March 11th, 2022

Dynabook Laptop Components Classified as Requiring Selective Treatment

Dynabook would like to communicate the method of identifying and removing components contained in Dynabook notebook products, including but not limited to the **TECRA A40-J, SATELLITE PRO A40-J/R40-J, dynabook EX40L-J** model, that requires selective treatment based on the European WEEE Directive, Directive 2012/19/EU of the European Parliament and of the Council on waste electrical and electronic equipment (WEEE).

All of the instructions provided within this letter can be reviewed in greater detail within the **TECRA A40-J, SATELLITE PRO A40-J/R40-J, dynabook EX40L-J** Series **Maintenance Manual**.

Tools Required

In order to remove internal components of the **TECRA A40-J, SATELLITE PRO A40-J/R40-J, dynabook EX40L-J** some tools from the list below may be required located in **Chapter 4 Replacement Procedures** of the **Dynabook Maintenance Manual**

For your safety and the safety of the people around you, it is important that you use Electrostatic Discharge (ESD) equipment. Correctly utilizing of the equipment increases the percentage of successful repairs and saves on the cost of damaged or destroyed parts. The following equipment is required for disassembly and assembly.

- One Philips screwdriver with type 0 bit (for S-THIN HEAD screws)
- One Philips screwdriver with type 1 bit (for screws other than above)
- One flat-blade screwdriver (for removing the CPU)
- Tweezers (for lifting screws)
- ESD mats (lay on work table or floor)
- An ESD wrist strap and heel grounder
- Anti-static carpet or flooring
- Air-ionizers in highly static sensitive areas
- Antenna coaxial cable disconnecter
- Special syringe (for applying grease)

Table of Contents

- (Page 2-4) Removing the Lithium Ion Battery (Main Battery, No coin cell battery)
- (Page 5) Removing the SSD
- (Page 6-43) LCD, Printed Circuit / Wiring Boards (PCB/ PWB system board)
- (Page 44-45) AC Adapter and external provide cable

1. Removing the Lithium Ion Battery (Main Battery, No coin cell battery)

Please refer to the information below for instructions regarding the identification and removal of the lithium ion battery. Further maintenance instructions can be found in section 4.11 of the

TECRA A40-J, SATELLITE PRO A40-J/R40-J, dynabook EX40L-J Maintenance Manual. Some tools are required in order to remove this component. Once removed, these components should be recycled as per local requirements.

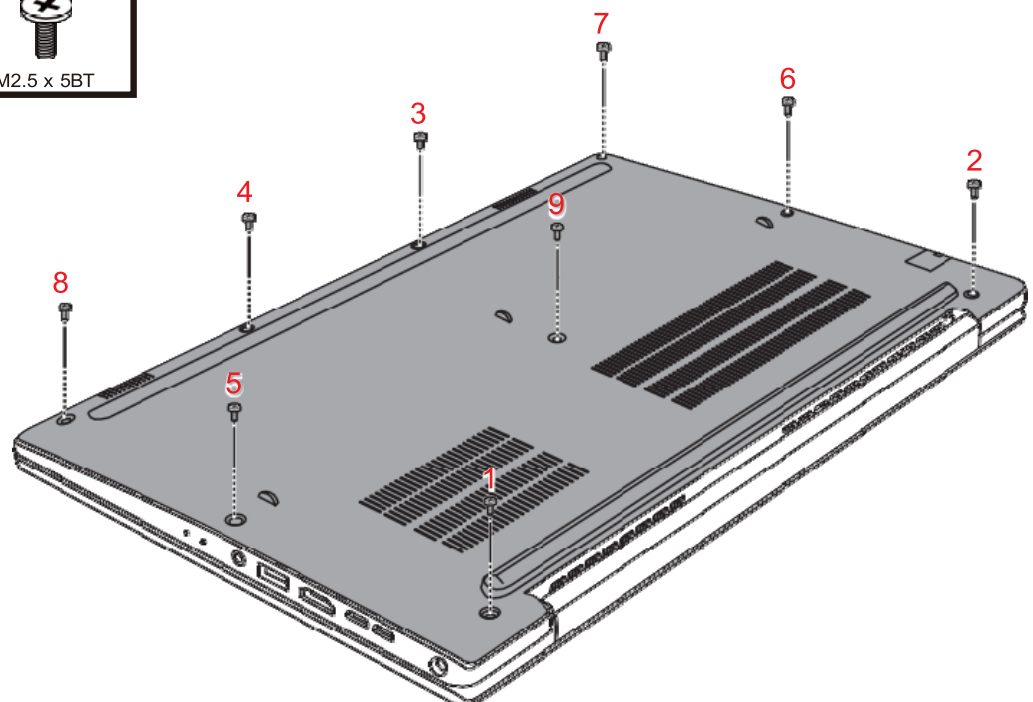
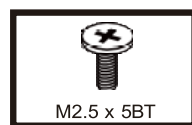
To remove the battery, the base assembly must be removed first:

4.11.1 Removing the Cover Assembly and Base Assembly

To remove the Base Assembly, follow the steps below and refer to [Figure 4-4](#) to [Figure 4-5](#).

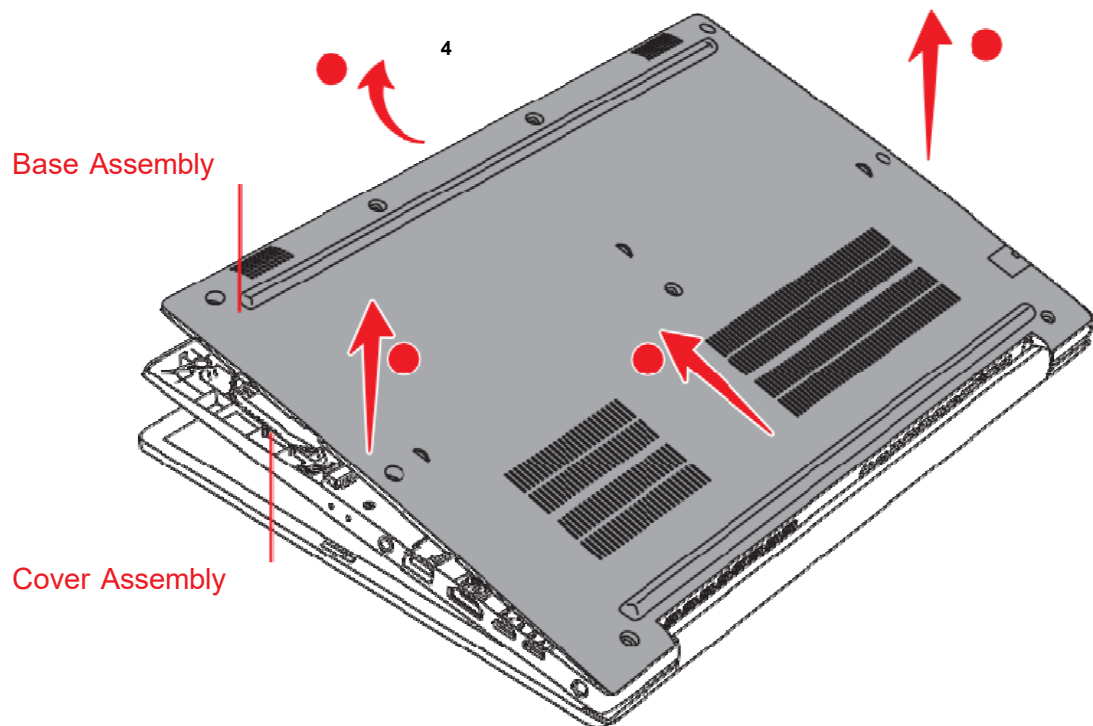
1. Close the display panel and turn the computer face down.
2. Remove the following screws securing the Cover Assembly and the Base Assembly.

Figure 4-4 Removing the Base Assembly (1)



3. Separate the **Base Assembly** and **Cover Assembly** while releasing the latches using a plectrum.

Figure 4-5 Removing the Base Assembly (2)



4.12.1 Removing the Battery pack

To remove the battery pack, follow the steps below and refer to [Figure 4-7](#) and [Figure 4-8](#).



Take care not to short circuit the terminals when removing the battery pack. Similarly, do not drop, knock, scratch, disassemble, twist, or bend the battery pack.

1. Disconnect the **BATTERY HARNESS** from the connector **CN8021** on the SYSTEM board.
2. Remove the following screws and the battery pack
3. Disconnect the BATTERY HARNESS from the connector on the battery pack.

Figure 4-7 Releasing the battery pack (1)

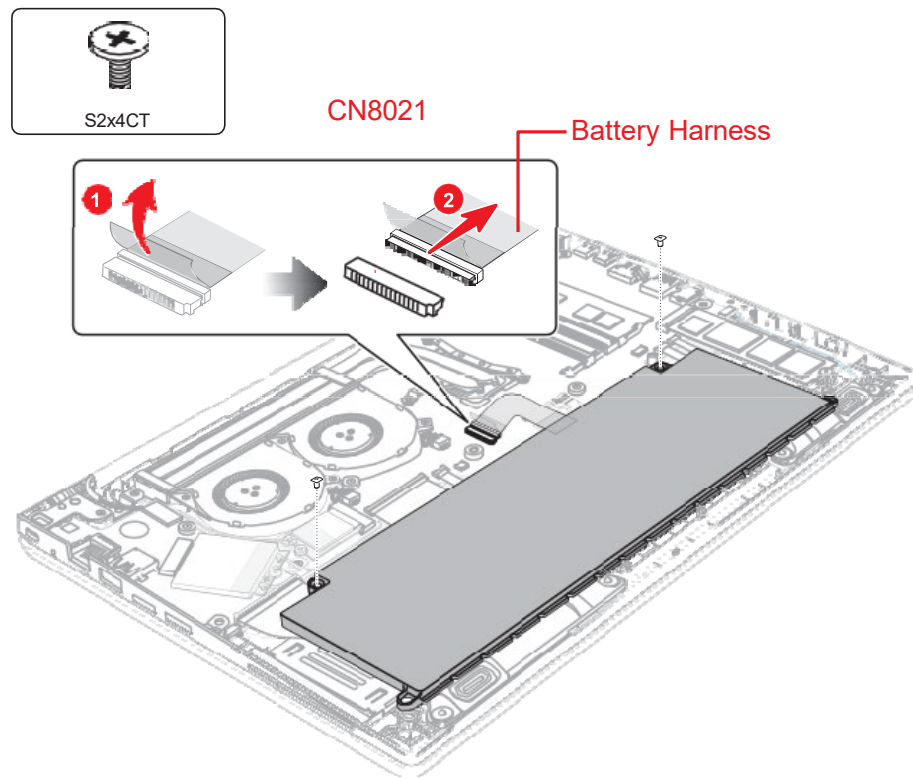
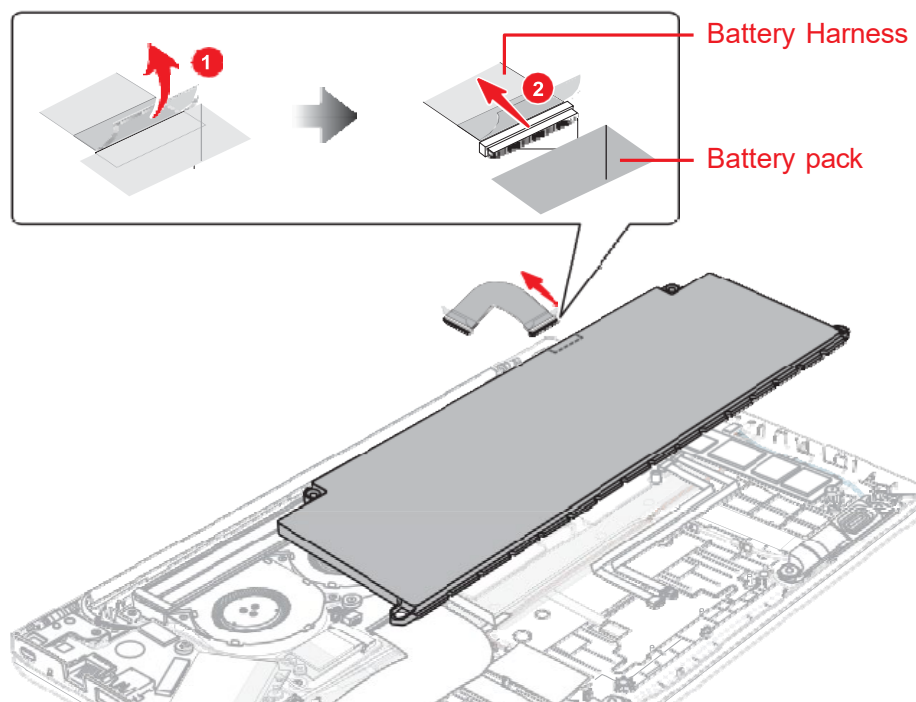


Figure 4-8 Releasing the battery pack (2)



Dispose of the used/removed battery pack in accordance with the laws and ordinances of your local authority.

2. Removing the SSD

Please refer to the information below for the removal of the SSD.

One Philips screwdriver with type 1 bit will be required to remove the screws indicated in the locations below. Once removed, these components should be recycled as per local requirements.

4.14.1 Removing the SSD

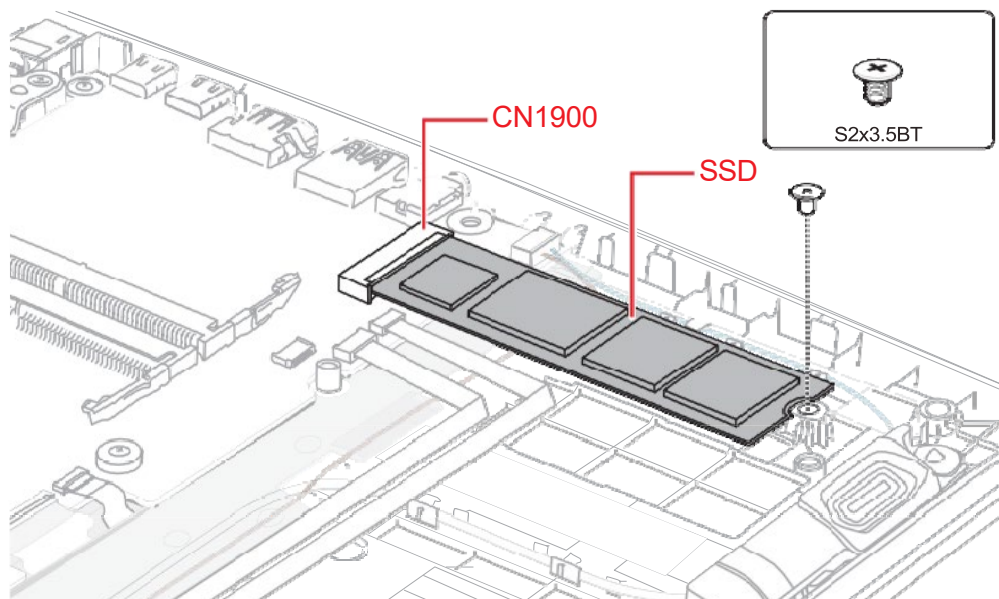
To remove the SSD, follow the steps below and refer to [Figure 4-11](#).



Take care not to press on the top or bottom of a SSD. Pressure may cause the data loss or damage to the device.

1. Remove the the following screw and disconnect the **SSD** from the connector **CN1900** on the SYSTEM board.

Figure 4-11 Removing the SSD



3. Removing the LCD and Printed Circuit / Wiring Boards

Beside the LCD and the main PCB, there are further **small PCBs and components** which are in the scope of the WEEE Directive. The removal of these components is described in detail in the **chapter 4** of the associated maintenance manual.

Replacement Procedures

Figure 4-4 Removing the Base Assembly (1)	4-9
Figure 4-5 Removing the Base Assembly (2)	4-10
Figure 4-6 Installing the Base Assembly	4-10
Figure 4-7 Releasing the battery pack (1)	4-11
Figure 4-8 Releasing the battery pack (2)	4-12
Figure 4-9 Removing the memory module(s)	4-13
Figure 4-10 Seating the memory module	4-14
Figure 4-11 Removing the SSD	4-15
Figure 4-12 Installing the SSD.....	4-15
Figure 4-13 Removing the Smart Card slot (1)	4-16
Figure 4-14 Removing the Smart Card slot (2)	4-16
Figure 4-15 Removing the Smart Card slot (3)	4-17
Figure 4-16 Installing the Smart Card slot	4-17
Figure 4-17 Removing the Wireless LAN card.....	4-18
Figure 4-18 Installing the Wireless LAN card	4-19
Figure 4-19 Removing the 3G module.....	4-19
Figure 4-20 Installing the 3G module	4-20
Figure 4-21 Removing the Fans	4-21
Figure 4-22 Removing the Fin	4-22
Figure 4-23 Removing the Click pad (1)	4-23
Figure 4-24 Removing the Click pad (2)	4-23
Figure 4-25 Installing the Click pad	4-24
Figure 4-26 Removing the Speaker (1)	4-24
Figure 4-27 Removing the Speaker (2)	4-25
Figure 4-28 Installing the Speaker.....	4-25
Figure 4-29 Removing the 3G antennas (1)	4-26
Figure 4-30 Removing the 3G antennas (2)	4-26
Figure 4-31 Removing the system board (1).....	4-28
Figure 4-32 Removing the system board (2).....	4-28
Figure 4-33 Removing the system board (3).....	4-29
Figure 4-34 Installing the system board.....	4-31
Figure 4-35 Removing the DC IN jack.....	4-32
Figure 4-36 Removing the USB board.....	4-33
Figure 4-37 Removing the Keyboard/Cover Assembly.....	4-34
Figure 4-38 Removing the LCD unit (1)	4-36
Figure 4-39 Removing the LCD unit (2)	4-37
Figure 4-40 Removing the LCD unit (3)	4-37
Figure 4-41 Installing the LCD unit (1).....	4-38
Figure 4-42 Installing the LCD unit (2).....	4-39
Figure 4-43 Installing the LCD unit (3).....	4-40
Figure 4-44 Installing the LCD unit (4).....	4-40
Figure 4-45 Removing the display hinges	4-41
Figure 4-46 Sticking the Wireless LAN antennas.....	4-42
Figure 4-47 Arranging the Wireless LAN antenna cables	4-42
Figure 4-48 Removing the camera module (1).....	4-43
Figure 4-49 Removing the camera module (2).....	4-43
Figure 4-50 Removing the camera module (3).....	4-43
Figure 4-51 Installing the Camera module (1).....	4-44
Figure 4-52 Installing the Camera module (2).....	4-45

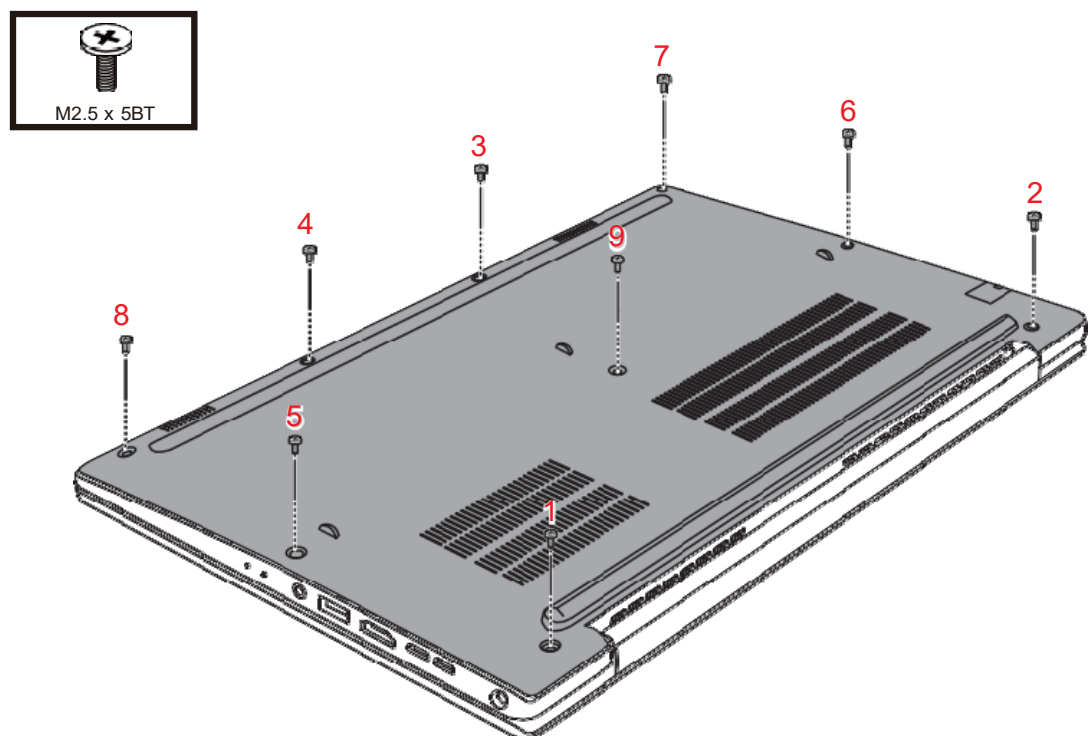
4.11 Cover Assembly and Base Assembly

4.11.2 Removing the Cover Assembly and Base Assembly

To remove the Base Assembly, follow the steps below and refer to [Figure 4- 4](#) to [Figure 4-5](#).

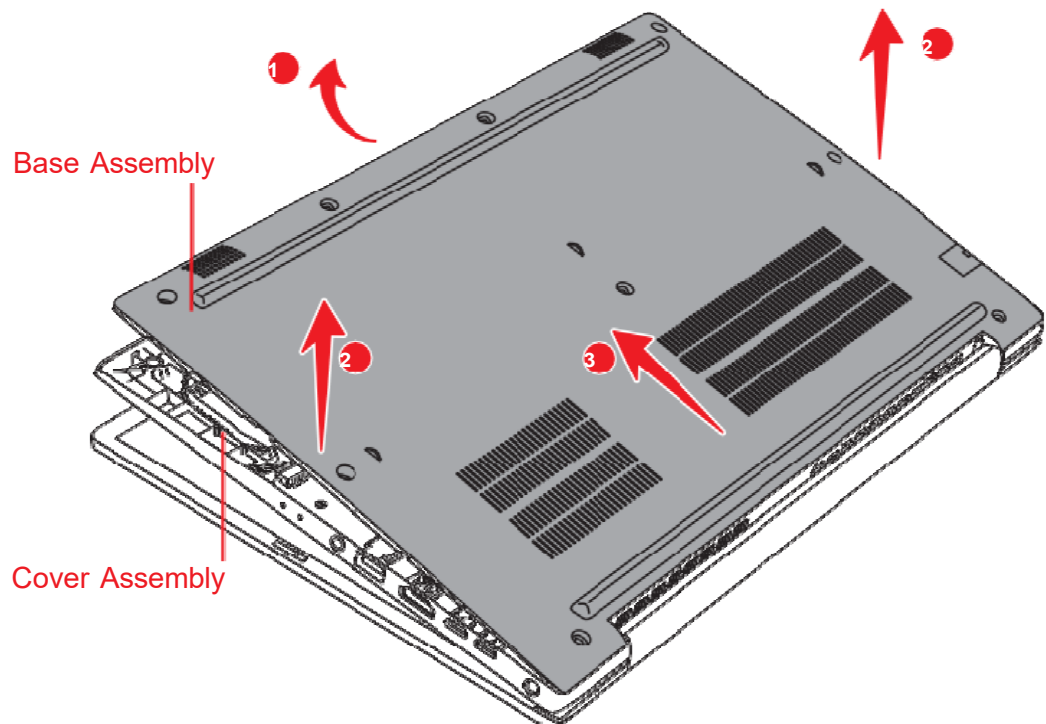
1. Close the display panel and turn the computer face down.
2. Remove the following screws securing the Cover Assembly and the Base Assembly.

Figure 4-4 Removing the Base Assembly (1)



3. Separate the **Base Assembly** and **Cover Assembly** while releasing the latches using a plectrum.

Figure 4-5 Removing the Base Assembly (2)

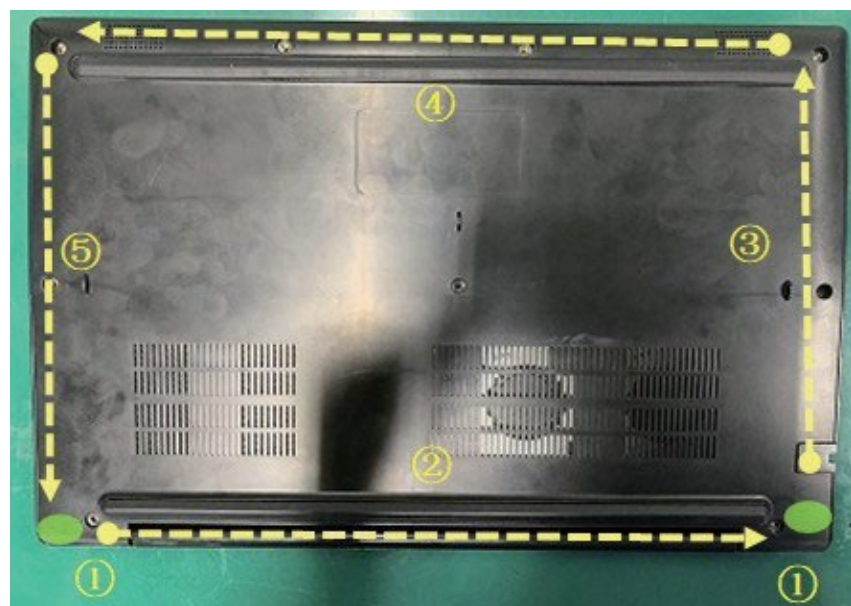


4.11.3 Installing the Base Assembly

To install the Base Assembly, follow the steps below and refer to [Figure 4-4](#) to [Figure 4-6](#).

1. Set the Cover Assembly on the Base Assembly while securing the latches.

Figure 4-6 Installing the Base Assembly



2. Secure the Cover Assembly and Base Assembly with the screws.



When securing the Base Assembly, be sure to drive the screws in the order of the number on [Figure 4-4](#).

3. Turn the computer, and open the display.

4.12 Battery pack

4.12.2 Removing the Battery pack

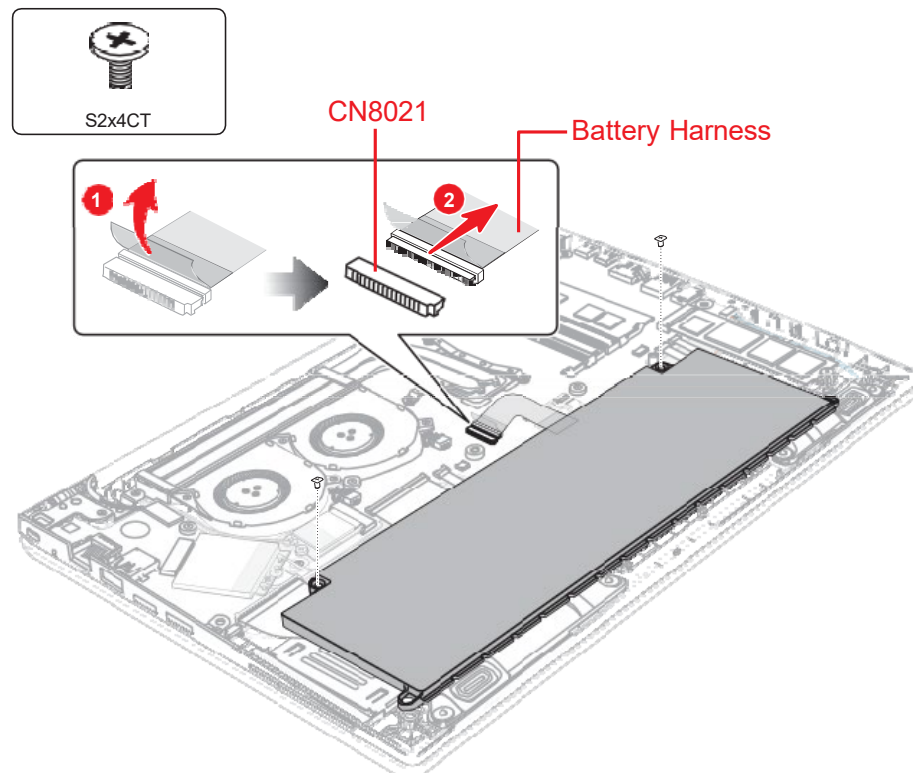
To remove the battery pack, follow the steps below and refer to [Figure 4-7](#) and [Figure 4-8](#).



Take care not to short circuit the terminals when removing the battery pack. Similarly, do not drop, knock, scratch, disassemble, twist, or bend the battery pack.

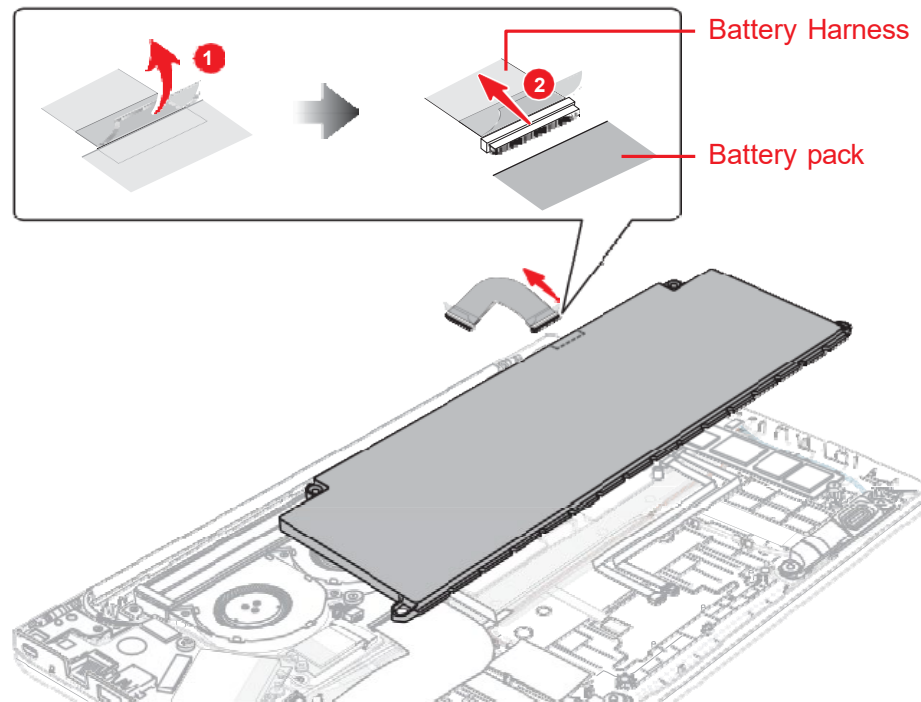
1. Disconnect the **BATTERY HARNESS** from the connector **CN8021** on the SYSTEM board.
2. Remove the following screws and the battery pack.

Figure 4-7 Releasing the battery pack (1)



3. Disconnect the **BATTERY HARNESS** from the connector on the battery pack.

Figure 4-8 Releasing the battery pack (2)



Dispose of the used/removed battery pack in accordance with the laws and ordinances of your local authority.

4.12.3 Installing the Battery pack

To install the battery pack, follow the steps below and refer to [Figure 4-7](#) and [Figure 4-8](#).



The lithium ion battery pack may explode if not fitted, operated, handled, or disposed correctly. Dispose always the used battery pack in accordance with the laws and ordinances of your local authority.

Use only the batteries approved by Dynabook.



Check the battery's terminals visually. If they are dirty, wipe them clean with a dry cloth.

1. Peel off the separator on one side of the battery harness and connect the **BATTERY HARNESS** to the connector on the battery pack.
2. Set the battery pack to the COVER ASSY and secure it with the screws.
3. Peel off the separator on the other side of the battery harness and connect the **BATTERY HARNESS** to the connector CN8021 on the SYSTEM board.

4.13 Memory module

4.13.1 Removing the Memory module

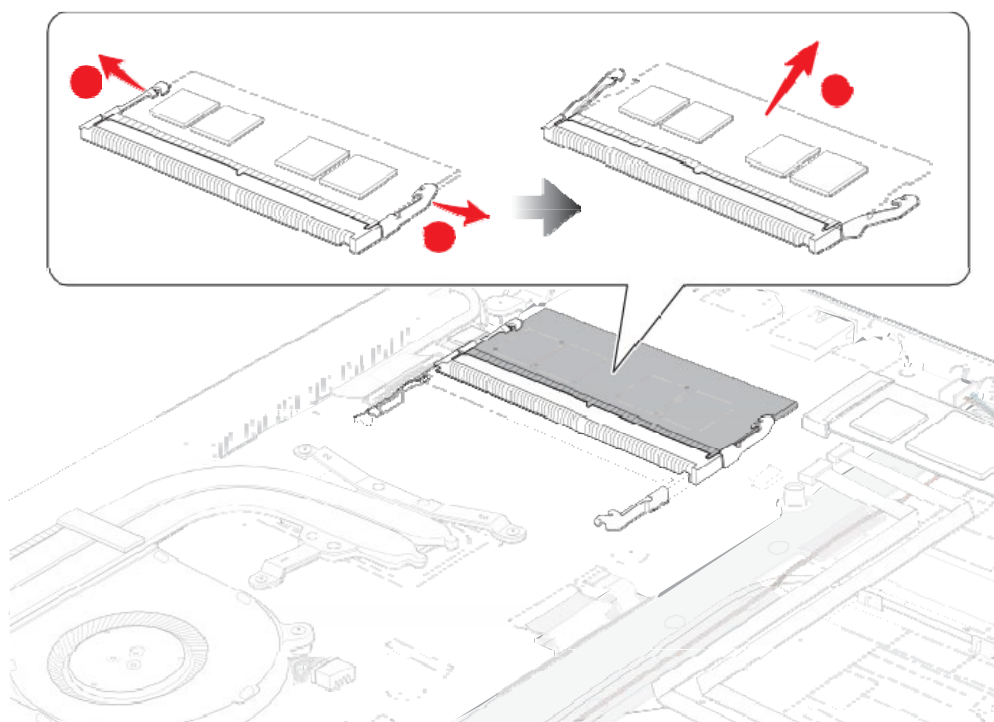
To remove the memory module, follow the steps as detailed below:



Do not touch the connectors on the memory module or on the computer. Dust or stains on the connectors may cause memory access problems. Never press hard or bend the memory module.

1. Open the left and right **latches** outside and remove the **memory module(s)**.

Figure 4-9 Removing the memory module(s)



1. Latches

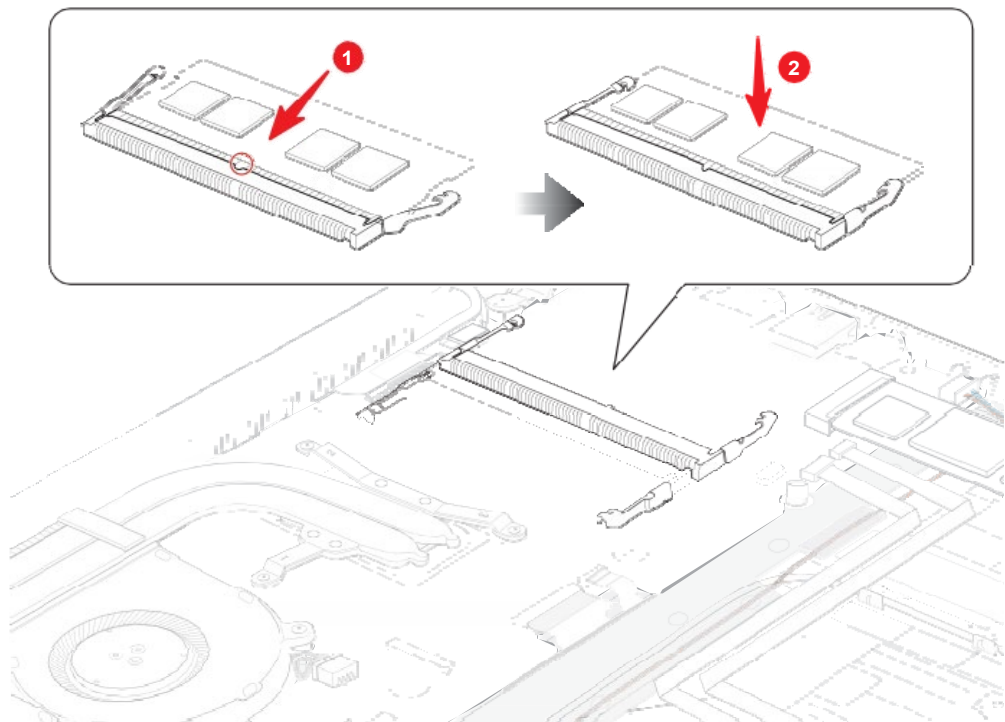
2. Memory module

4.13.2 Installing the Memory module

To install a memory module, follow the steps as detailed below:

1. Align the notch of the memory module with that of the memory slot and gently insert the module into the slot at about a 30 degree angle before holding it down until the latches on either side snap into place.

Figure 4-10 Seating the memory module



After installing the memory module, make sure that the memory module is secured with the left and right latches.

4.14 SSD

4.14.2 Removing the SSD

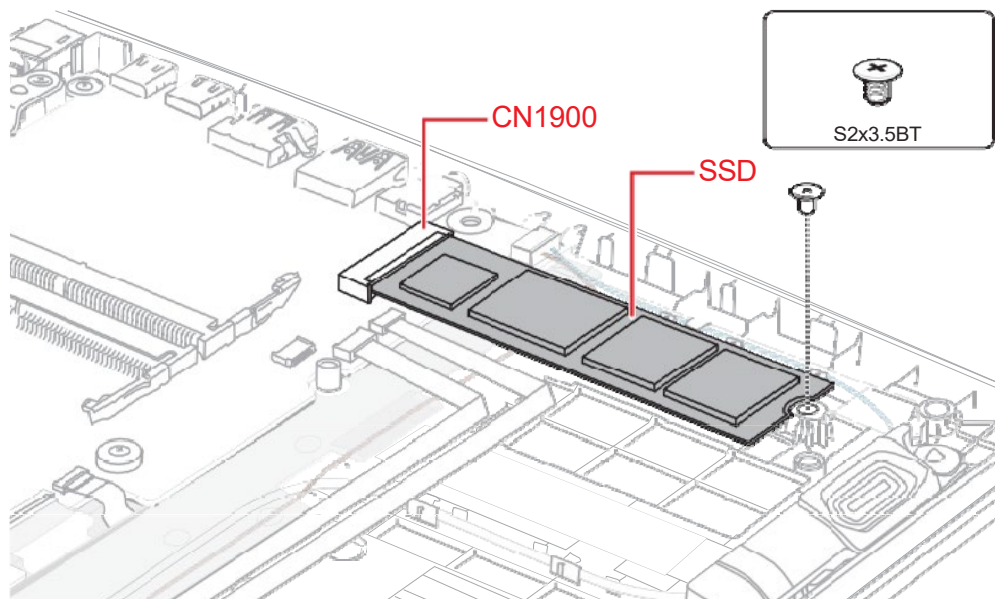
To remove the SSD, follow the steps below and refer to [Figure 4-11](#).



Take care not to press on the top or bottom of a SSD. Pressure may cause the data loss or damage to the device.

1. Remove the the following screw and disconnect the **SSD** from the connector **CN1900** on the SYSTEM board.

Figure 4-11 Removing the SSD



4.14.3 Installing the SSD

To install the SSD, follow the steps below and refer to [Figure 4-12](#).

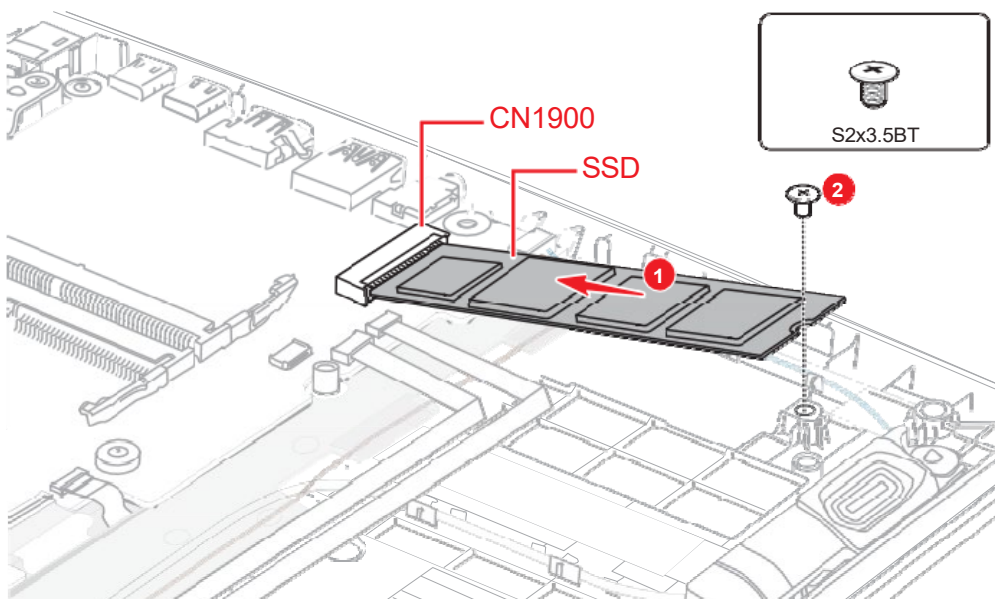


To avoid damage, always hold the SSD only by its sides.

To prevent the SSD from being distorted when installing the SSD pack into the computer, do not press the center of the SSD pack. Always hold the SSD pack by its sides.

1. Insert the **SSD** to the connector **CN1900** on the **System Board (FMERSY*)** slantwise.
2. Push down the **SSD** and secure it with the screw.

Figure 4-12 Installing the SSD



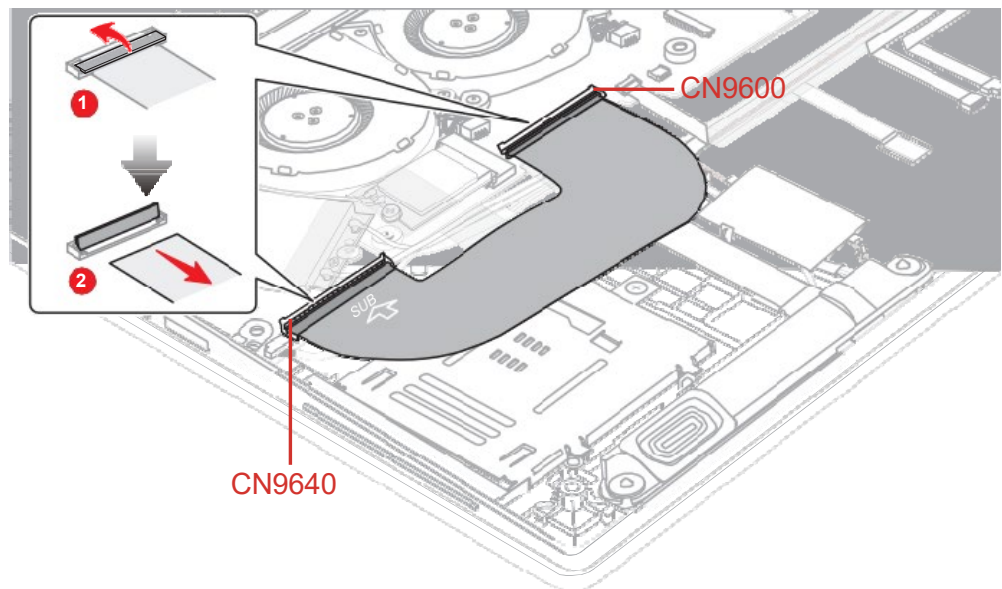
4.15 Smart Card slot

4.15.1 Removing the Smart Card slot

To remove the Smart Card slot unit, follow the steps below and refer to [Figure 4-13](#) to [Figure 4-15](#).

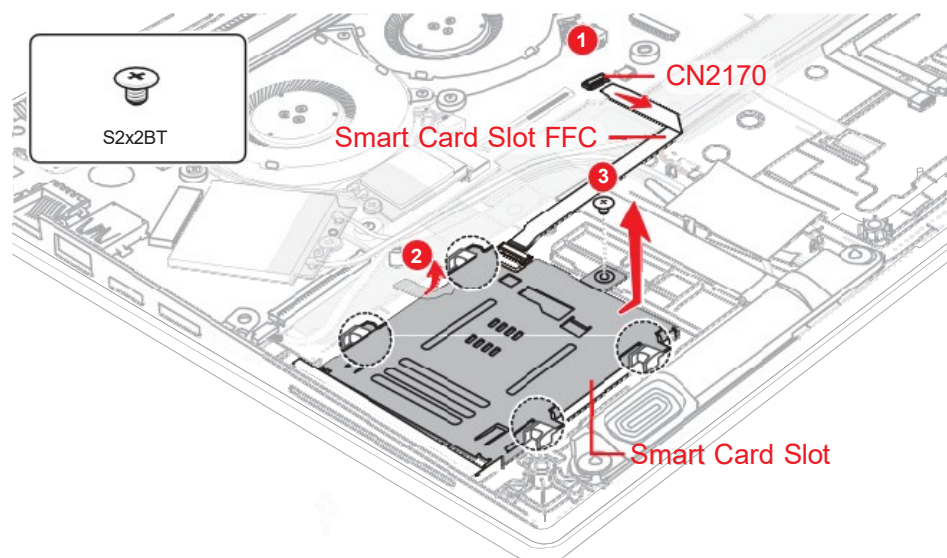
1. Disconnect the FPC/FFC from the connector **CN9600** on the SYSTEM board and **CN9640** on the USB board.

Figure 4-13 Removing the Smart Card slot (1)



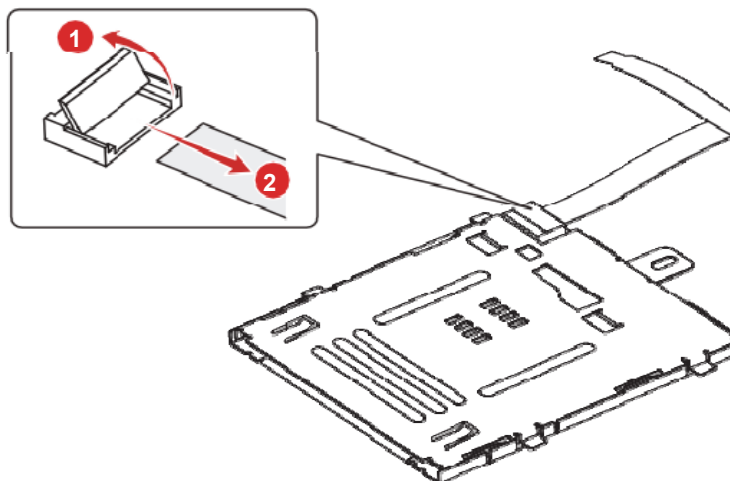
2. Peel off the INSU SC from the Smart Card slot.
3. Disconnect the **Smart Card FFC** from the connector **CN2170** on the system board.
4. Remove the following screw and peel off the AL TAPE. Then slide and lift the Smart Card slot unit shown in the following figure to remove the Smart Card slot.

Figure 4-14 Removing the Smart Card slot (2)



5. Disconnect the **Smart Card FFC** from the connector on the Smart Card slot.

Figure 4-15 Removing the Smart Card slot (3)

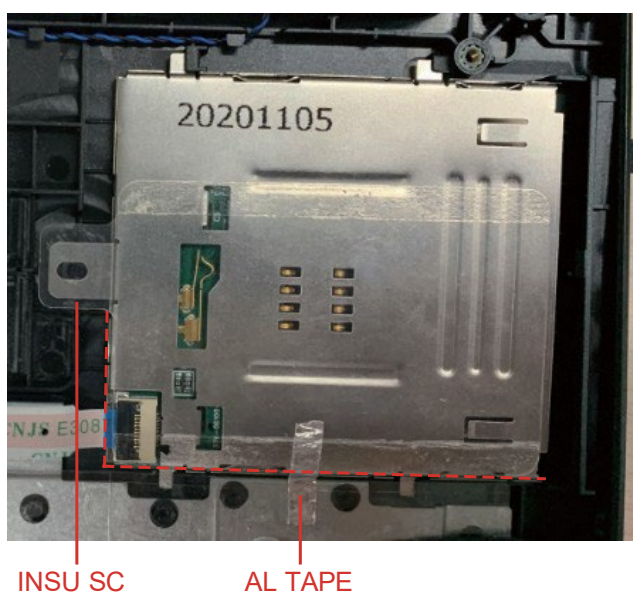


4.15.2 Installing the Smart Card slot

To install the Smart Card slot, follow the steps below and refer to [Figure 4-13](#) to [Figure 4-16](#).

1. Connect the **Smart Card FFC** to the connector on the Smart Card slot.
2. Set the **Smart Card slot** in place and secure it with the screw.
3. Connect the **Smart Card FFC** to the connector **CN2170** on the system board.
4. Stick the **AL TAPE** and **INSU SC** in place.

Figure 4-16 Installing the Smart Card slot



5. Connect the FPC/FFC to the connector **CN9600** on the SYSTEM board and **CN9640** on the USB board.

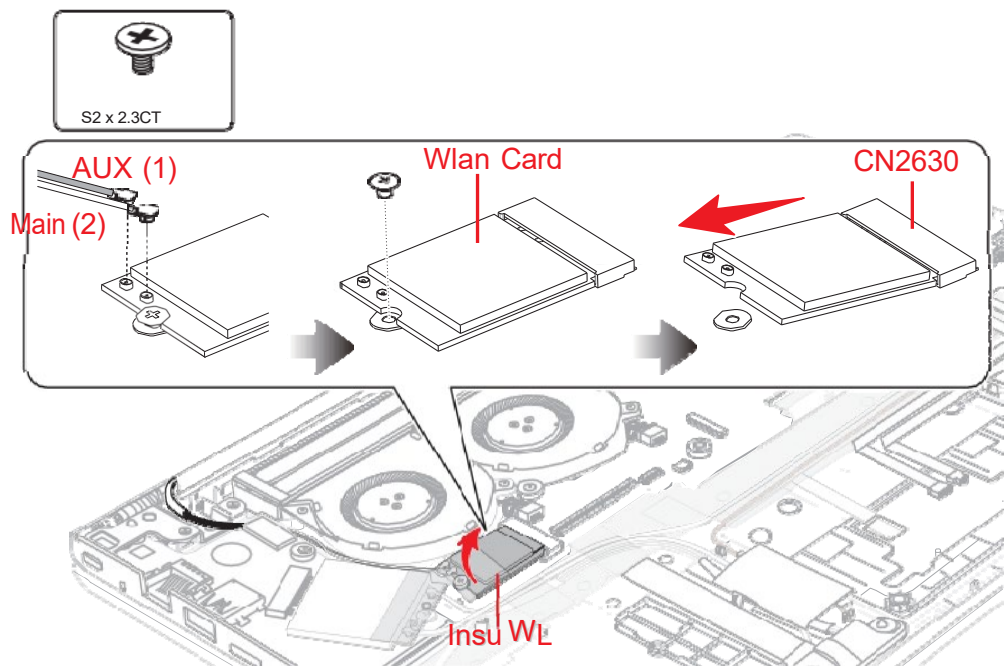
4.16 Wireless LAN card

4.16.1 Removing the Wireless LAN card

To remove the Wireless LAN card, follow the steps below and refer to [Figure 4-17](#).

1. Peel off the **INSU WL**.
2. Disconnect the **Wireless LAN antenna cable** from the connector on the Wireless LAN card (black cable from “**AUX**” or “**1**” and white cable from “**Main**” or “**2**”).
3. Release the **Wireless LAN antenna cable** from the guides on the Cover Assembly.
4. Remove the screw securing the **Wireless LAN card**.
5. Disconnect the **Wireless LAN card** from the connector **CN2630** on the **System Board (FMERSY*)**.

Figure 4-17 Removing the Wireless LAN card

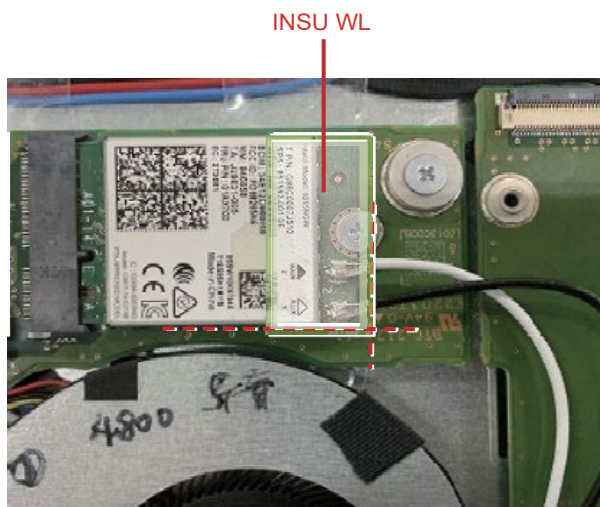


4.16.2 Installing the Wireless LAN card

To install the Wireless LAN card, follow the steps below.

1. Insert the **Wireless LAN card** to the connector **CN2630** on the **System Board (FMERSY*)** slantwise and press it to connect firmly.
2. Push down the **Wireless LAN card** and secure it with the screw.
3. Arrange the **Wireless LAN antenna cables** to the guides.
4. Connect the **Wireless LAN antenna cables** to the connectors (black cable to “**AUX**” or “**1**” and white cable to “**Main**” or “**2**”) on the **Wireless LAN card**.
5. Stick a new **INSU WL** in place.

Figure 4-18 Installing the Wireless LAN card



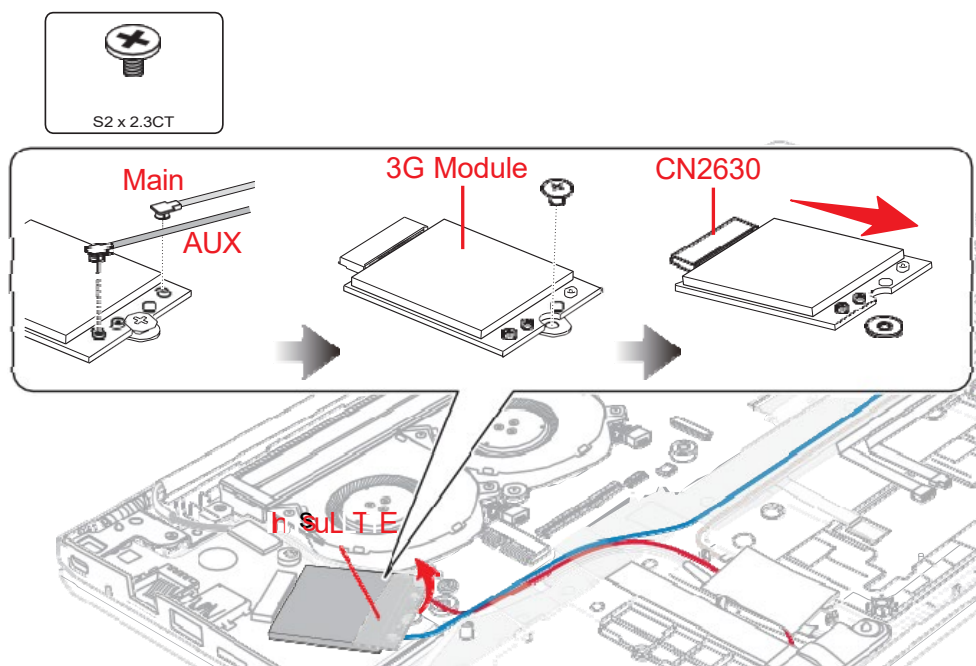
4.17 3G module

4.17.1 Removing the 3G module

To remove the 3G module, follow the steps below and refer to Figure 4-19.

1. Peel off the **INSU LTE**.
2. Disconnect the **3G ANTENNA cables** from the connectors on the 3G MODULE. (red tube from "MAIN")
3. Remove the following screw and disconnect the **3G MODULE** from the connector **CN2610** on the **USB board (FMERLT*)**.

Figure 4-19 Removing the 3G module



4.17.2 Installing the 3G module

To install the 3G module, follow the steps below.

1. Insert the **3G MODULE** to the connector **CN2610** on the USB board. Secure the 3G MODULE with the screw.
2. Connect the **3G ANTENNA cables** to the connectors on the 3G MODULE. (red tube to “MAIN”)
3. Stick a new **INSU LTE** in place.

Figure 4-20 Installing the 3G module



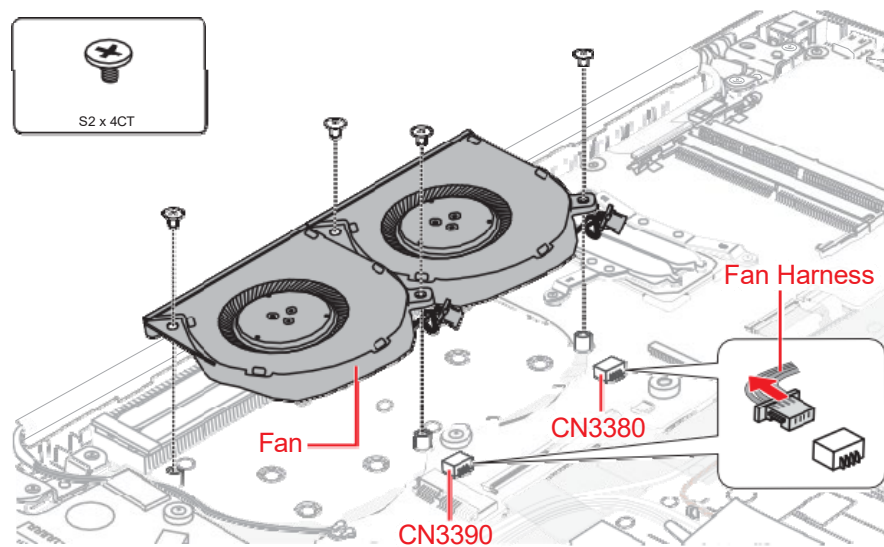
4.18 Fans

4.18.1 Removing the Fans

To remove the Fans, follow the steps below and refer to [Figure 4-21](#).

1. Disconnect the **Fan harness** from the connector **CN3380** and **CN3390** on the **System Board (FMERSY*)**.
2. Remove the following screws and the Fans from the Cover Assembly.

Figure 4-21 Removing the Fans



4.18.2 Installing the Fans

To install the Fans, follow the steps below and refer to [Figure 4-21](#).

1. Set the Fans in place on the Cover Assembly and secure them with the screws.
2. Connect the **Fan harness** to the connector **CN3380** and **CN3390** on the **System Board (FMERSY*)**.

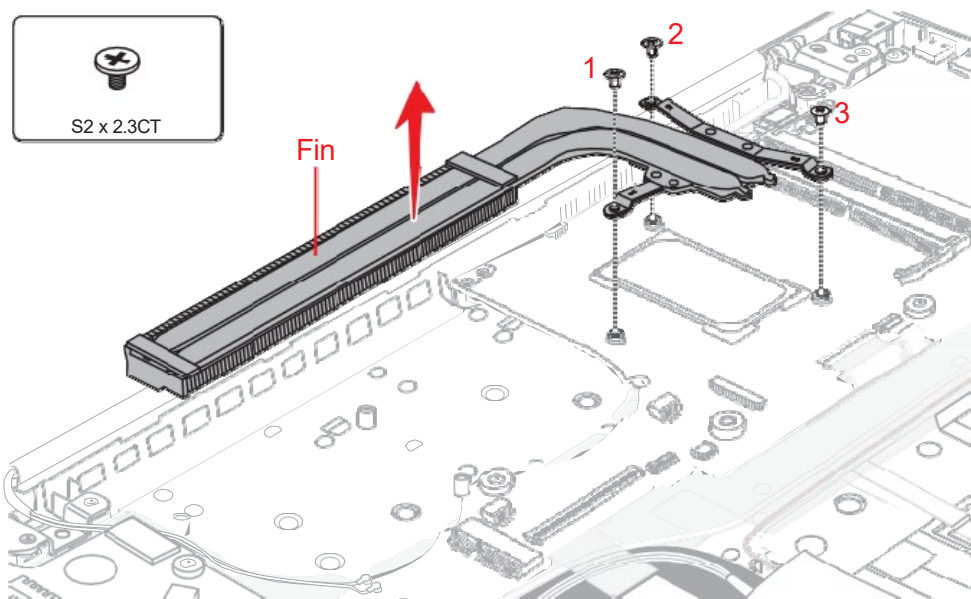
4.19 Fin

4.19.1 Removing the Fin

To remove the Fin, follow the steps below and refer to [Figure 4-22](#).

1. Remove the following screws and then the **Fin**.

Figure 4-22 Removing the Fin



When removing the Fin, be sure to remove the screws in the reverse order of the number marked on the Fin.

4.19.2 Installing the Fin

To install the Fin, follow the steps below and refer to [Figure 4-22](#).

1. Set the **Fin** in place and secure it with the screws.



When installing the Fin, be sure to install the screws in the order of the number marked on the Fin.

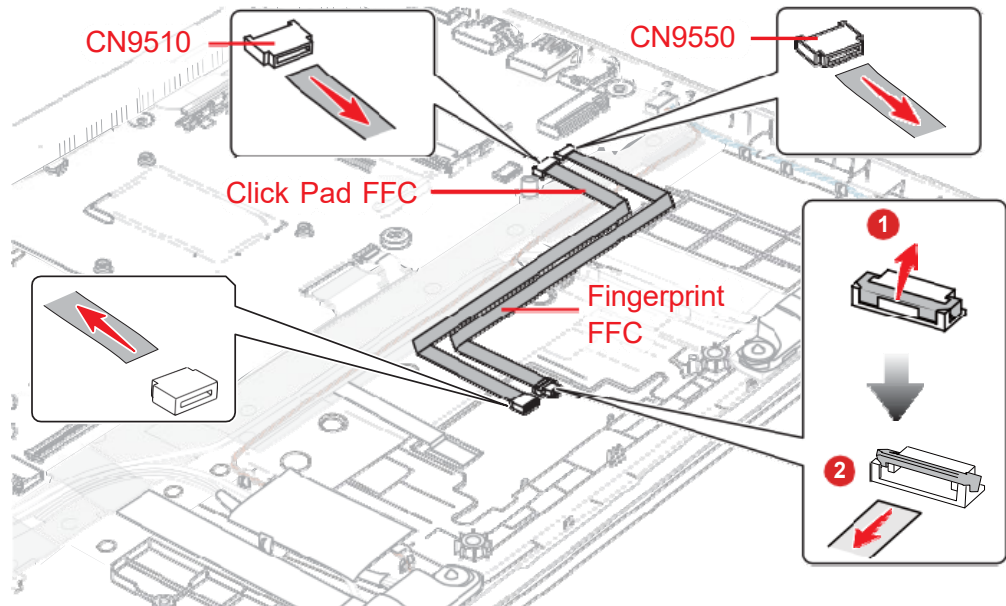
4.20 Click pad

4.20.1 Removing the Click pad

To remove the click pad, follow the steps below and refer to [Figure 4-23](#) to [Figure 4-24](#).

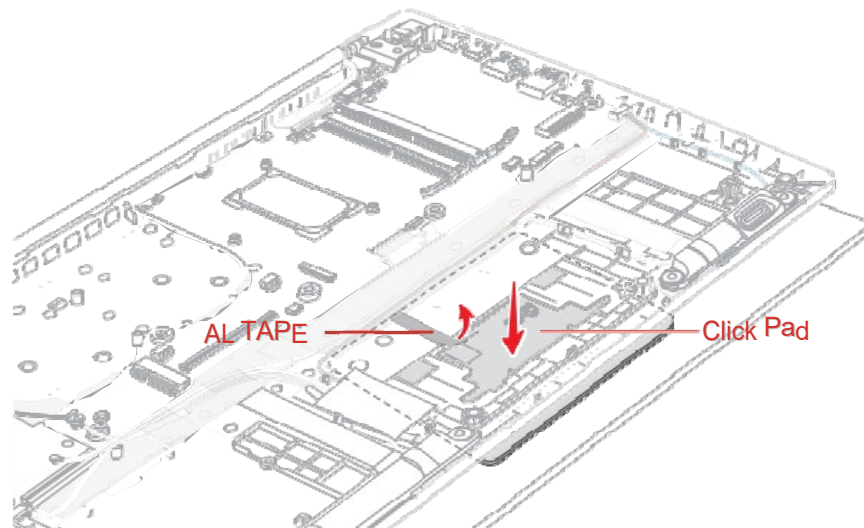
1. Disconnect the **Click Pad FFC** and **Fingerprint FFC** from the connectors on the Click Pad and the connectors **CN9510** and **CN9550** on the **System Board**.

Figure 4-23 Removing the Click pad (1)



2. Peel off the **AL TAPE** from the Click Pad and then peel off the **Click Pad** from the Cover Assembly.

Figure 4-24 Removing the Click pad (2)

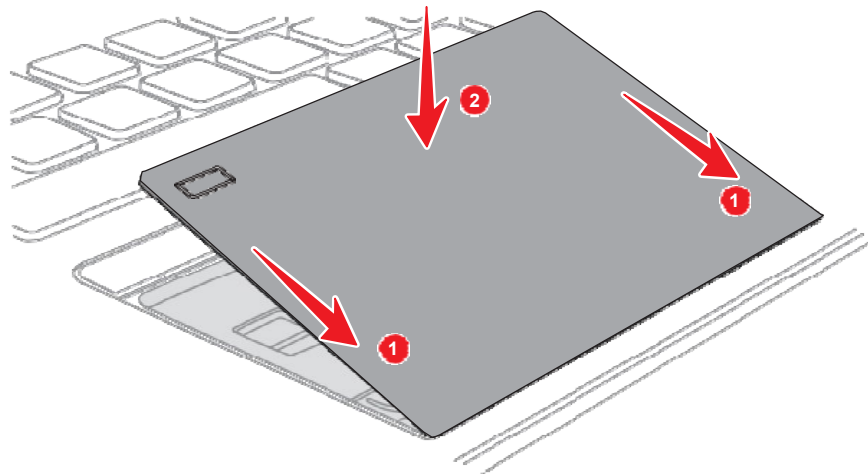


4.20.2 Installing the Click pad

To install the Click pad, follow the steps below and refer to [Figure 4-23](#) to [Figure 4-25](#).

1. Stick the Click Pad FACE SHEET to a new Click Pad.
2. Peel off the separator on the Click Pad RIM ASSY and stick the new **Click Pad** to the Cover Assembly.

Figure 4-25 Installing the Click pad



3. Stick a new **AL TAPE** to the Click pad and Click Pad RIM ASSY.
4. Connect the **Click Pad FFC** and **Fingerprint FFC** to the connector on the Click Pad and the connector **CN9510** and **CN9550** on the **System Board**.

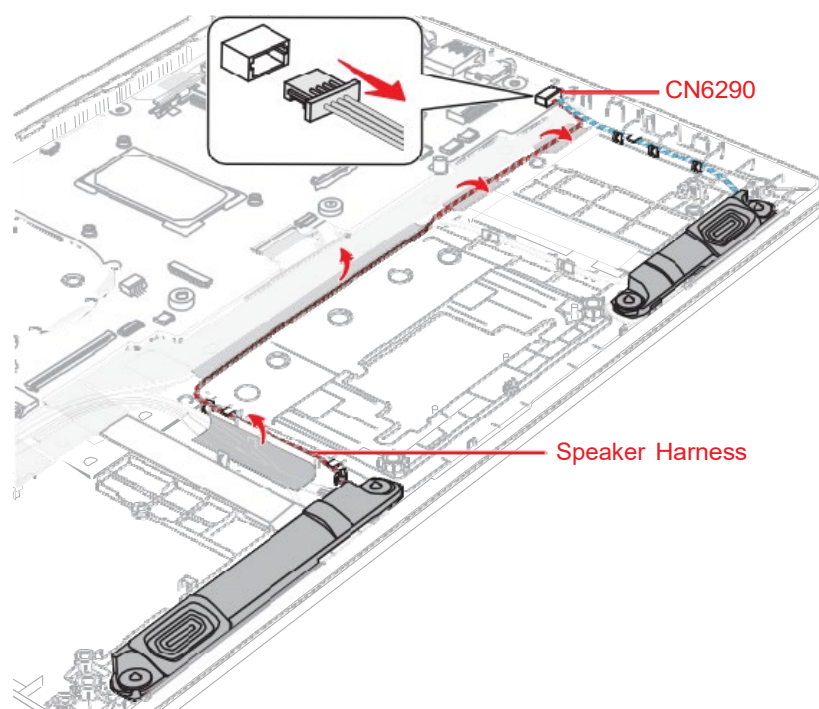
4.21 Speaker

4.21.1 Removing the Speaker

To remove the Speaker, follow the steps below and refer to [Figure 4-26](#) to [Figure 4-27](#).

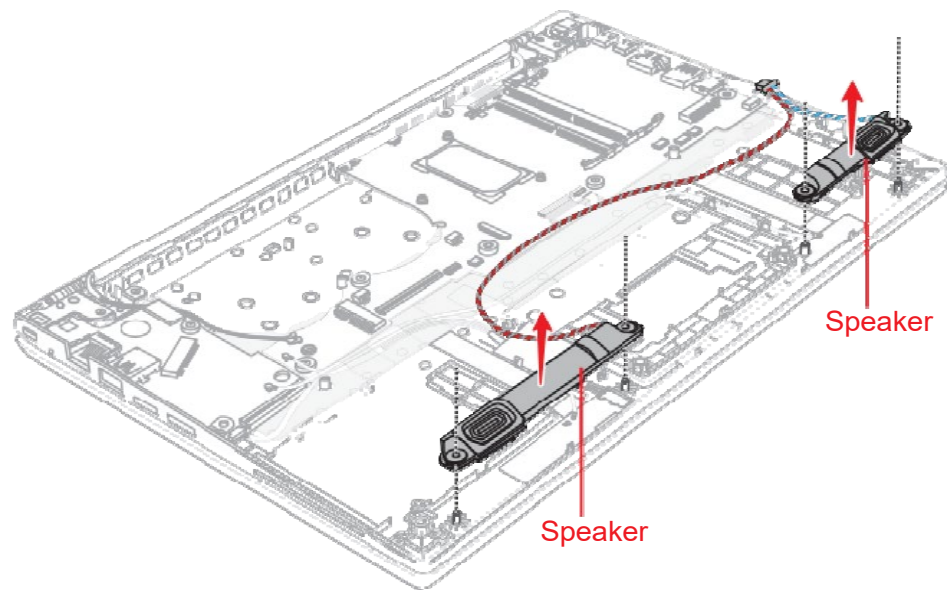
1. Disconnect the **Speaker harness** from the connector **CN6290** on the system board.
2. Open the stick tapes. Release the **Speaker harness** from the guides.

Figure 4-26 Removing the Speaker (1)



3. Remove the Speaker from the Cover Assembly.

Figure 4-27 Removing the Speaker (2)

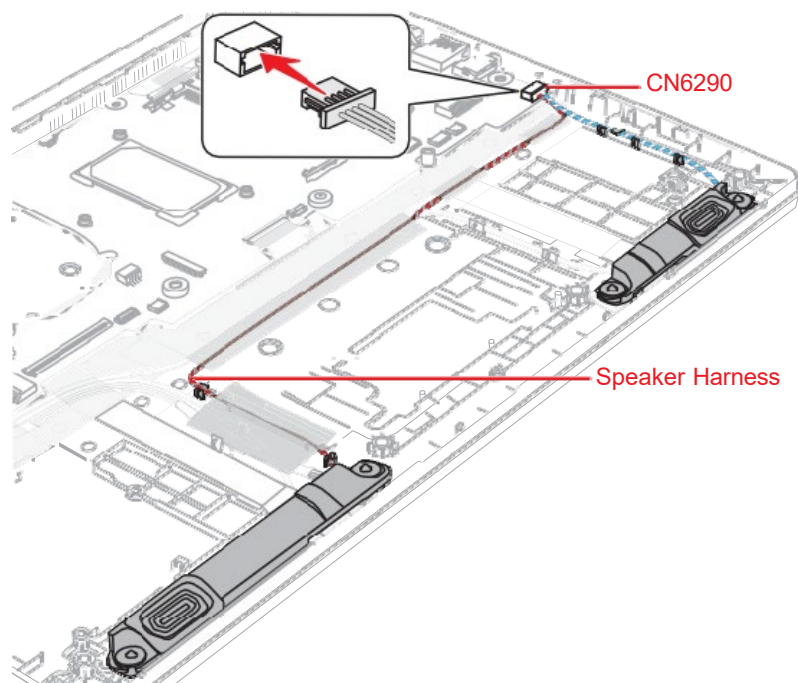


4.21.2 Installing the Speaker

To install the Speaker, follow the steps below.

1. Set the speakers to the Cover Assembly in place.
2. Arrange the **Speaker harness** under the guides as shown below.
3. Connect the **Speaker harness** to the connector **CN6290** on the system board.
4. Arrange the rest of **Speaker harness** as shown below, and fix it with the stick stapes.

Figure 4-28 Installing the Speaker



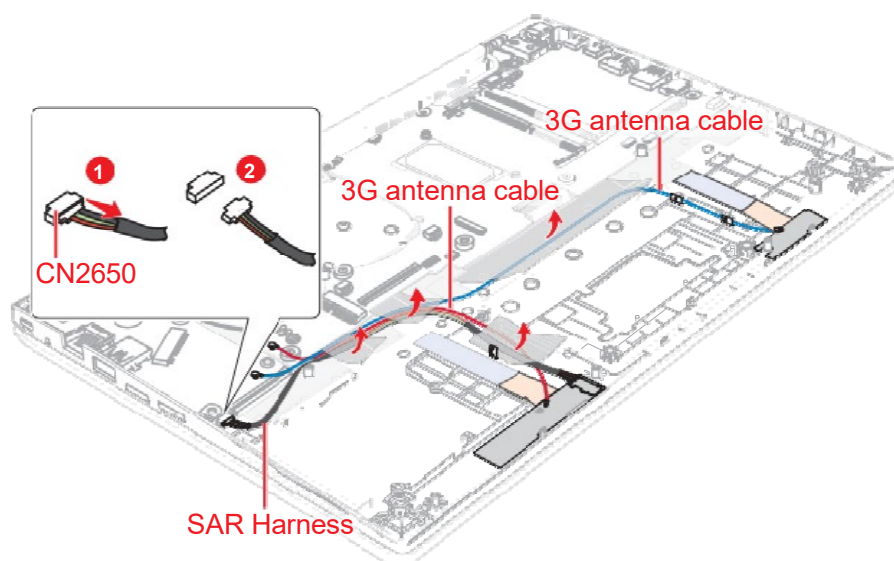
4.22 3G antennas

4.22.1 Removing the 3G antennas

To remove the 3G antennas, follow the steps below.

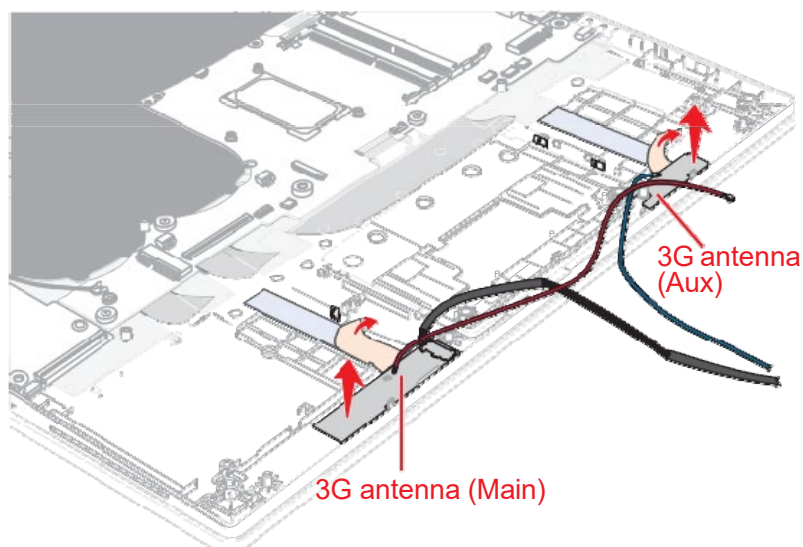
1. Disconnect the **SAR harness** from the connector **CN2650** on the **USB board (FMERLT*)**.
2. Open the stick tapes. Release the 3G antenna cables and SAR harness from the guides on the Cover Assembly.

Figure 4-29 Removing the 3G antennas (1)



3. Peel off the 3G antennas from the Cover Assembly.

Figure 4-30 Removing the 3G antennas (2)



Do not reuse the removed 3G antennas. Be sure to use new 3G antenna.

4.22.2 Installing the 3G antennas

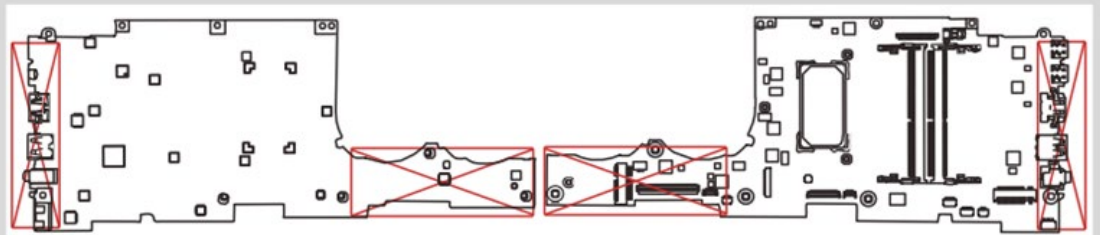
To install the 3G antennas, follow the steps below and refer to [Figure 4-29](#) to [Figure 4-30](#).

1. Stick new **3G antennas (AUX/Main)** in place.
2. Arrange the **3G antenna cables** and **SAR harness** in place on the Cover Assembly, and fix them with the stick staples.
3. Connect the **SAR harness** to the connector **CN2650** on the **USB board (FMERLT*)**.

4.23 System board



1. If replacing with a new system board, update the DMI information as described in Chapter 3, [Tests and Diagnostics](#). Also update with the latest BIOS and EC/KBC as described in Appendix G, [BIOS Rewrite Procedures](#), and Appendix H, [EC/KBC Rewrite Procedures](#).
2. When replacing the system board with a new one, the ProductKey (MBR-DPK) must be written on the system board.
3. When removing/installing the system board, do not handle with the handling prohibition area.

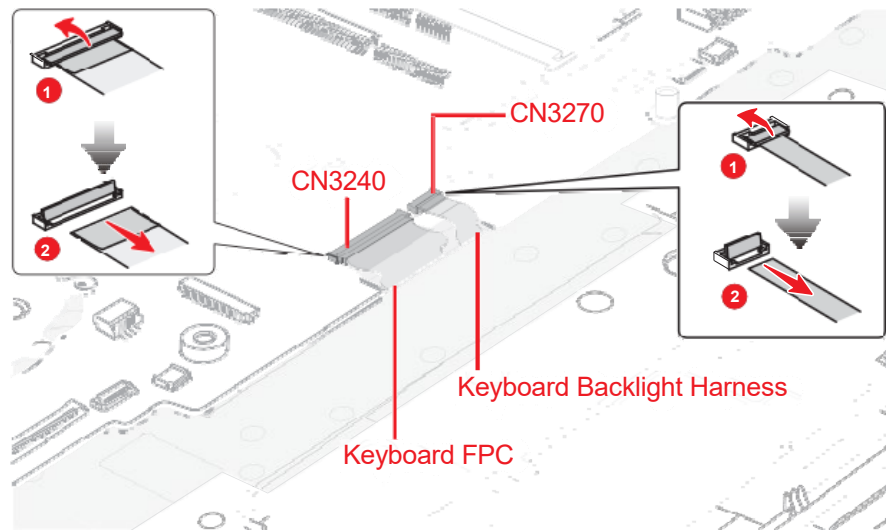


4.23.1 Removing the System board

To remove the system board, follow the steps below and refer to [Figure 4-31](#) to [Figure 4-33](#).

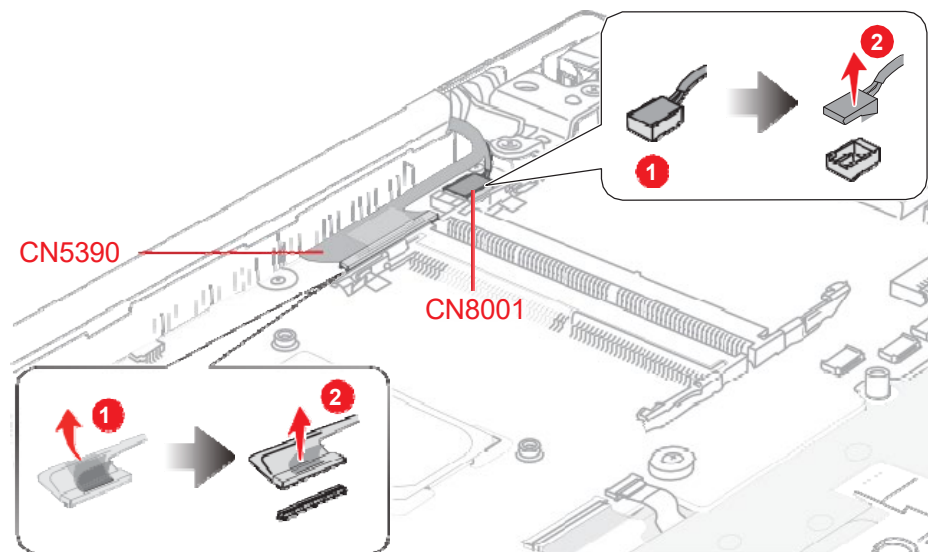
1. Disconnect the **Keyboard FPC** from the connector **CN3240** and **Keyboard Backlight harness** from the connector **CN3270** on the **System Board (FMERSY*)**.

Figure 4-31 Removing the system board (1)



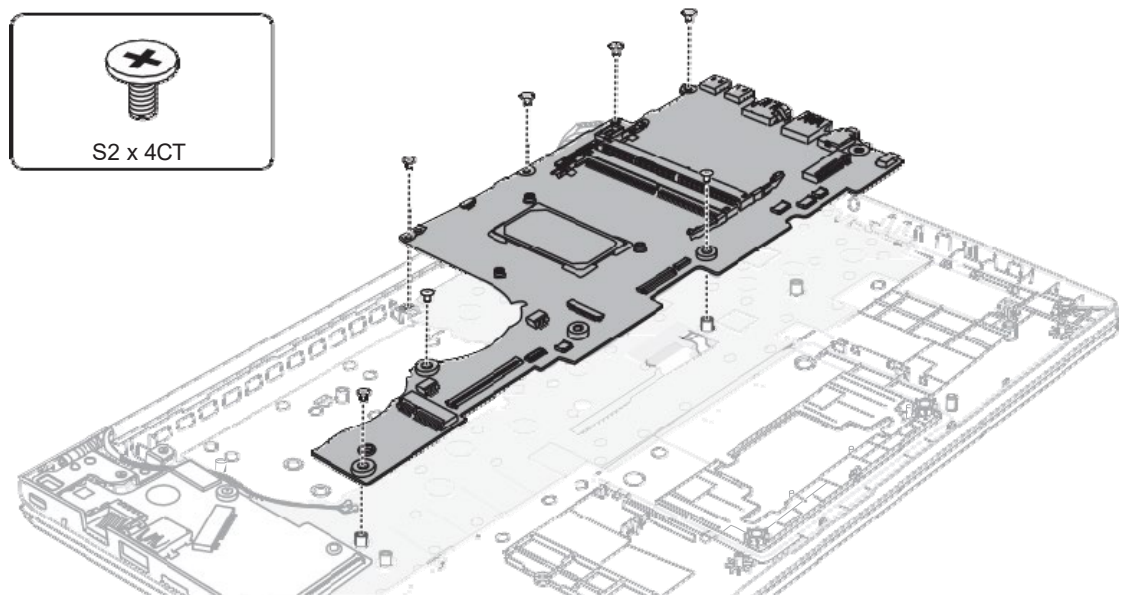
2. Disconnect the **LCD/Webcam harness** from the connector **CN5390** and **DC IN harness** from the connector **CN8001** on the **System Board** (FMERSY*).

Figure 4-32 Removing the system board (2)



3. Remove the following the screws. Carefully lift up the system board.

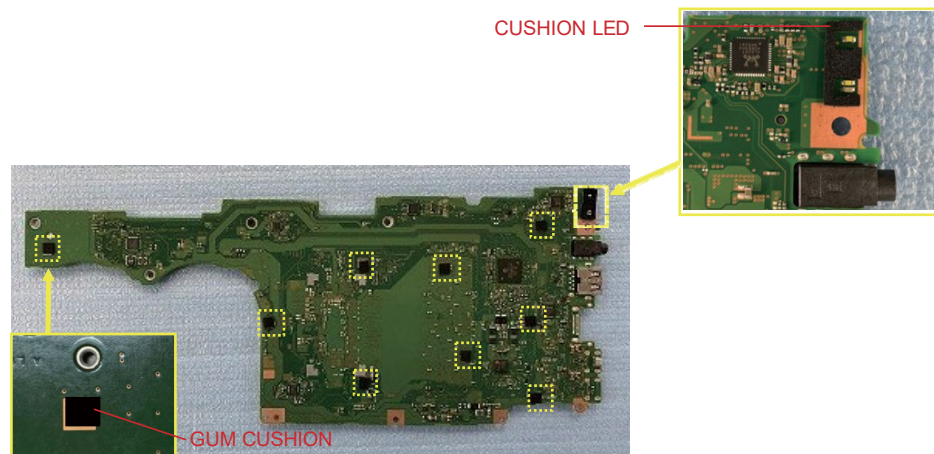
Figure 4-33 Removing the system board (3)



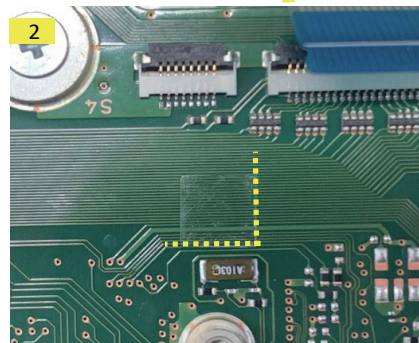
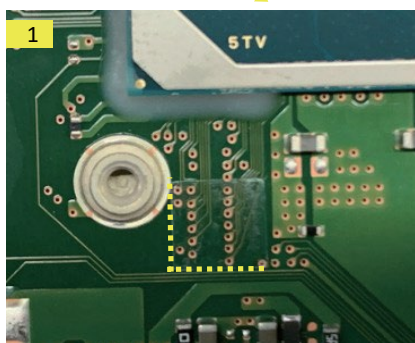
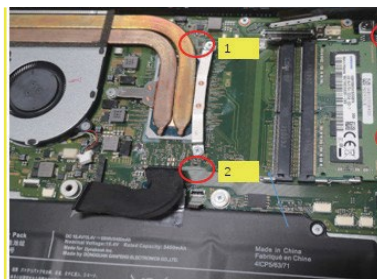
4.23.2 Installing the System board

Note: When replacing the system board with a new one

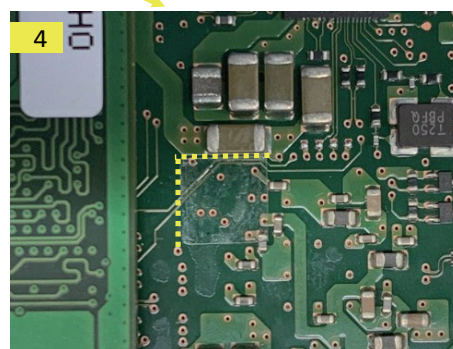
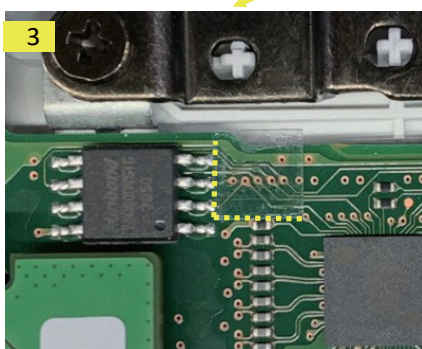
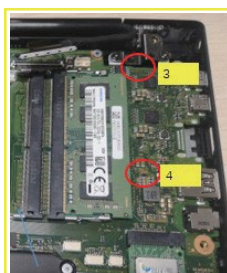
- Stick nine pieces of new **GUM CUSHION** and one piece of new **CUSHION LED** on one side of the system board in place.



- (For models with memory module cover) Stick two pieces of new **INSU SQUARE** on the other side of the system board in place.



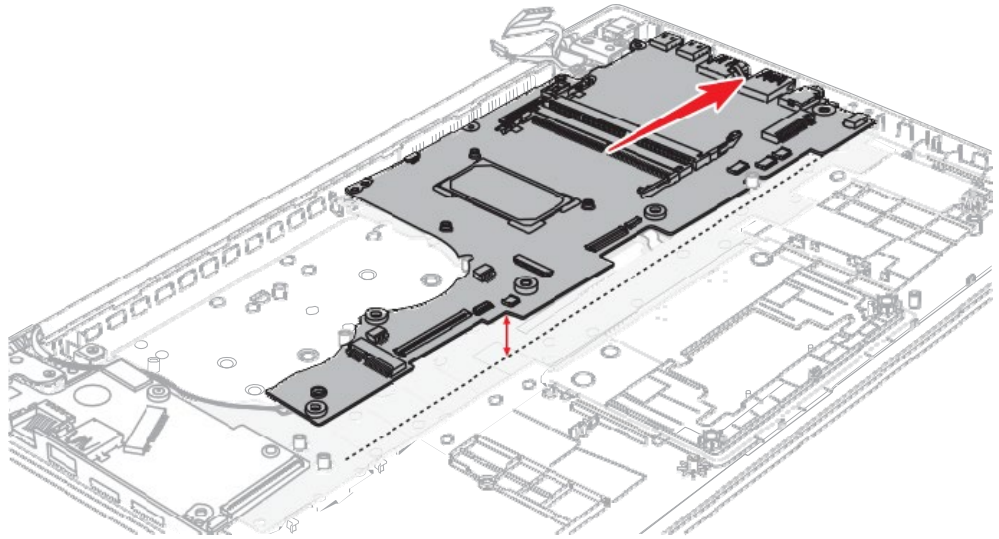
- Stick two pieces of new **INSU SQUARE** on the other side of the system board in place.



To install the system board, follow the steps below and refer to [Figure 4-31](#) to [Figure 4-34](#).

1. Set the system board in place.

Figure 4-34 Installing the system board



2. Secure the system board with the screws.
3. Connect the LCD/Webcam harness to the connector **CN5390** and DC IN harness to the connector **CN8001** on the **System Board (FMERSY*)** and arrange the harness to the guide on the Cover Assembly.
4. Connect the **Keyboard FPC** to the connector **CN3240** and **Keyboard Backlight harness** to the connector **CN3270** on the **System Board (FMERSY*)**.

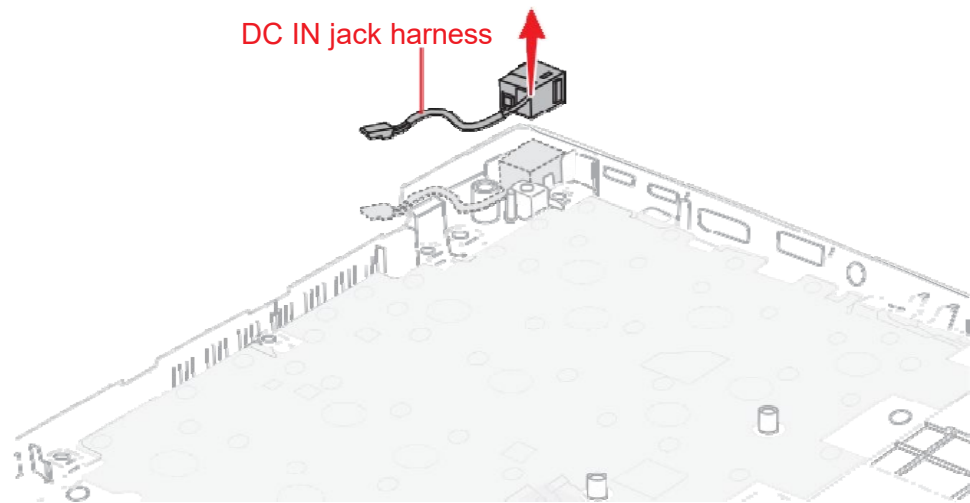
4.24 DC IN jack

4.24.1 Removing the DC IN jack

To remove the DC IN jack, follow the steps below and refer to [Figure 4-35](#).

1. Release two screws securing the right display hinge and rotate the display hinge to upright position.
2. Release the DC IN jack harness from the guide, and remove the DC IN jack from the slot on the Cover Assembly.

Figure 4-35 Removing the DC IN jack



4.24.2 Installing the DC IN jack

To install the DC IN jack, follow the steps below and refer to [Figure 4-35](#).

1. Set the DC IN jack to the slot on the Cover Assembly and arrange the DC IN jack harness to the guide.
2. Rotate the right display hinge to original position and secure it with two screws.

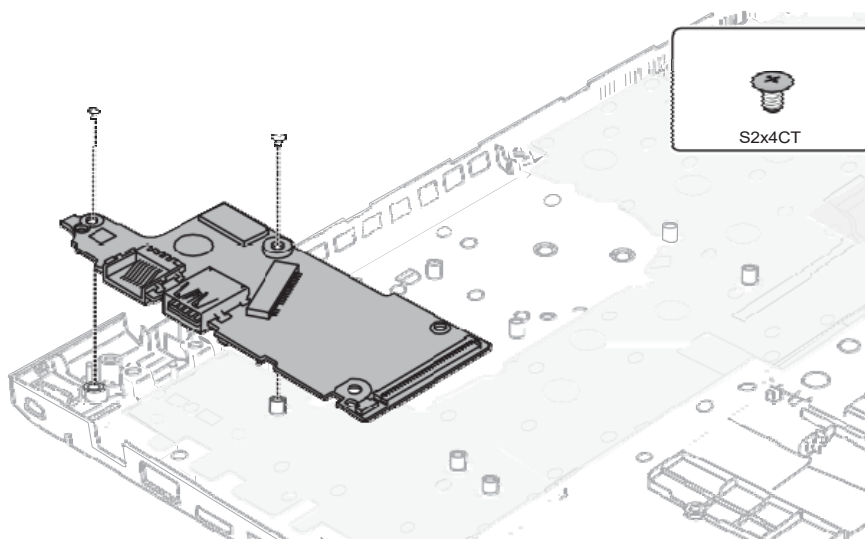
4.25 USB board

4.25.1 Removing the USB board

To remove the USB board, follow the step below and refer to [Figure 4-36](#).

1. Release two screws securing the left display hinge and rotate the display hinge to upright position.
2. Remove the following screws and the USB board from the Cover Assembly.

Figure 4-36 Removing the USB board

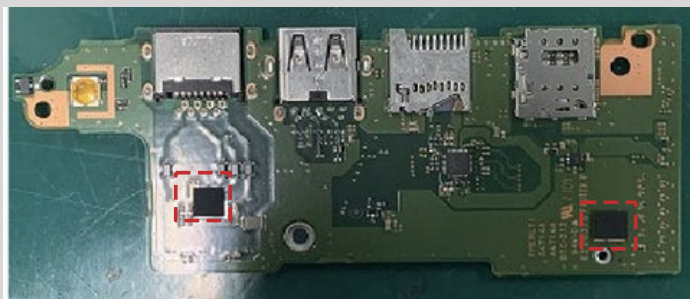


4.25.2 Installing the USB board

To install the USB board (FMERLT*), follow the step below and refer to Figure 4-36.



When replacing the USB board with a new one, stick two pieces of **GUM CUSHION** on the USB board in place.



1. Set the **USB board (FMERLT*)** to the Cover Assembly in place and secure it with the screws.
2. Rotate the left display hinge to original position and secure it with two screws.

4.26 Keyboard/Cover Assembly

The keyboard is assembled to the Cover Assembly by hot melt glue. When either the keyboard or the Cover Assembly needs to be replaced with a new one, please replace them all with a new set of keyboard and Cover Assembly which are already assembled.

4.26.1 Removing the Keyboard/Cover Assembly

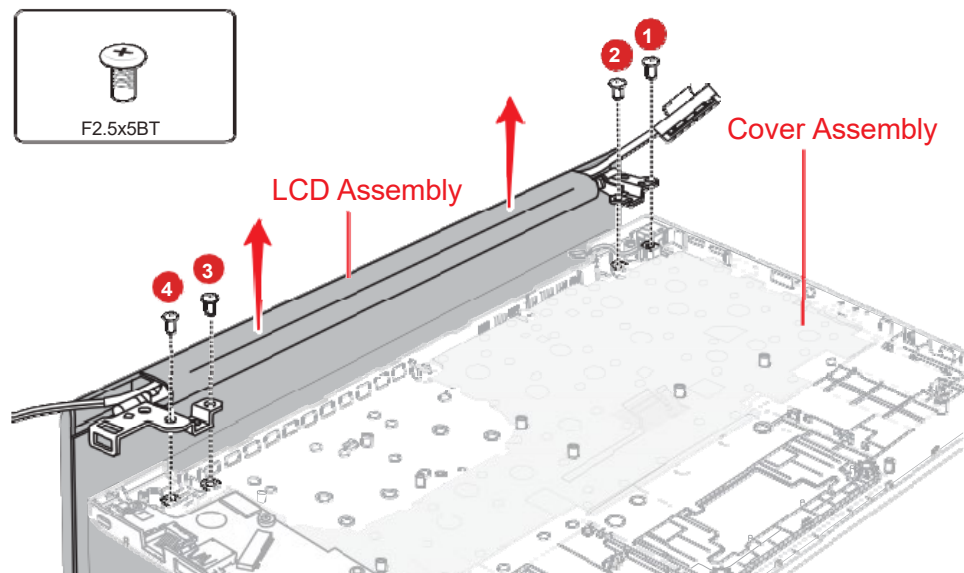
To remove the Keyboard/Cover Assembly, follow the step below and refer to Figure 4-37.



As the keytop may fall out, when handling the keyboard, always hold it by the frame and do not touch the key top.

1. Release the following screws and separate the **LCD Assembly** and **Cover Assembly**.

Figure 4-37 Removing the Keyboard/Cover Assembly



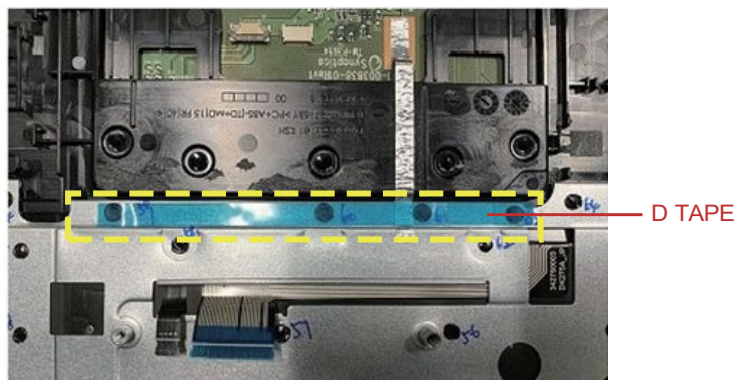
4.26.2 Installing the Keyboard/Cover Assembly

To install the Keyboard/Cover Assembly, follow the step below and refer to [Figure 4-37](#).

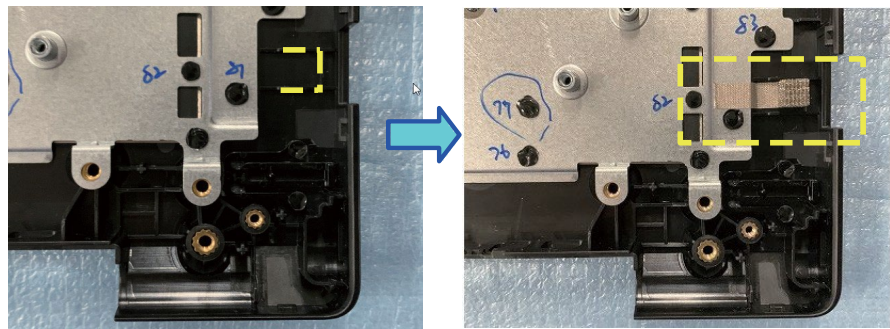
1. Set the LCD Assembly on the Cover Assembly and secure them with the screws.

Note: When replacing the Cover Assembly with a new one

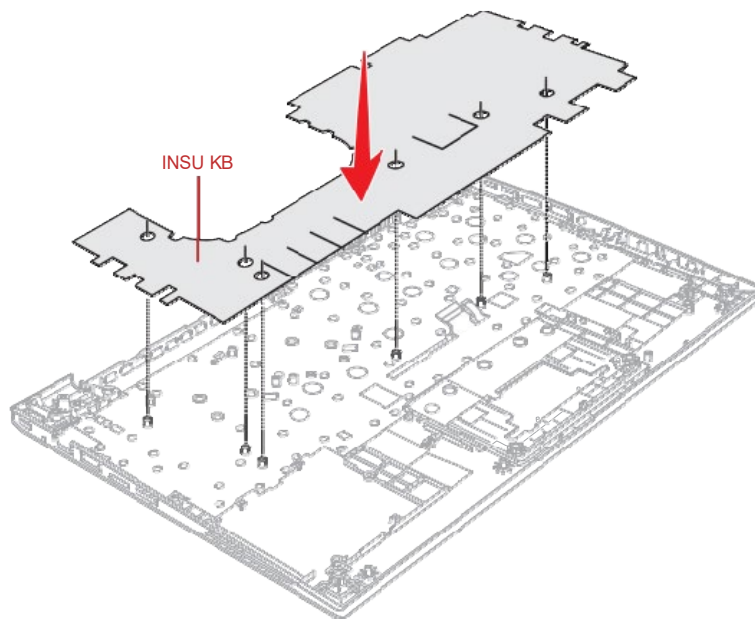
- Stick the **D TAPE** on the cover assembly in place and remove the separator on it.



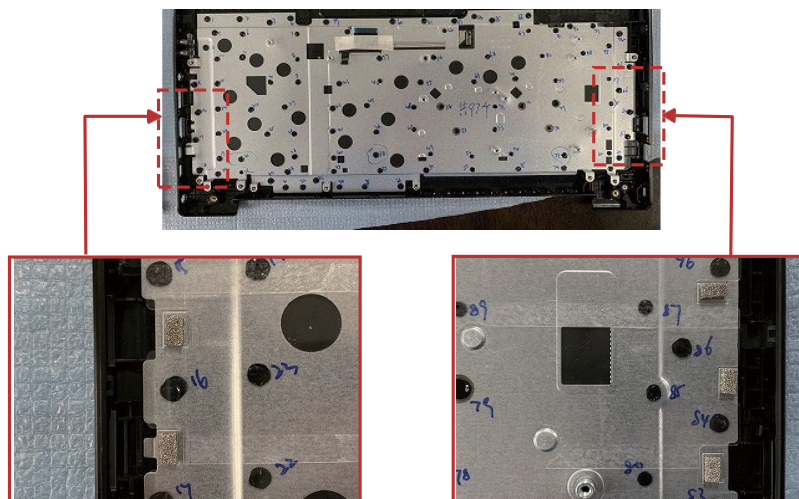
- Stick one piece of **GASKET** on the cover assembly in place.



- Stick the **INSU KB** on the cover assembly in place.



- Stick five pieces of **GASKET** on the cover assembly in place.



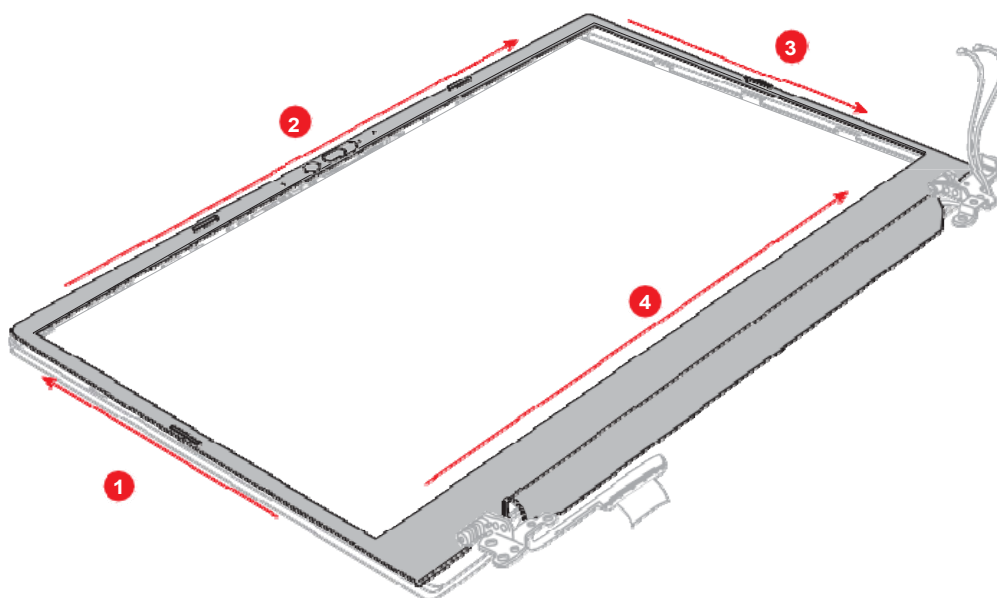
4.27 LCD Assembly

4.27.1 Removing the LCD unit

To remove the LCD unit, follow the steps below and refer to [Figure 4-38](#) to [Figure 4-40](#).

1. Release the latches from each side and detach the LCD mask from the LCD cover.

Figure 4-38 Removing the LCD unit (1)

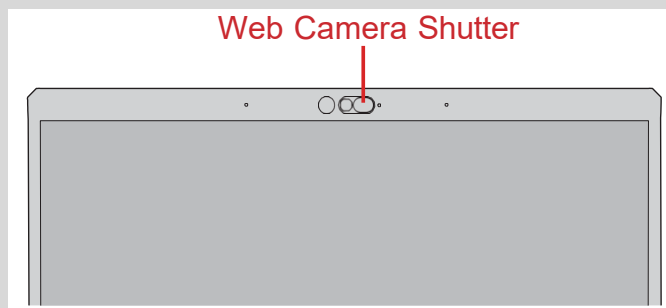


Do not lift the LCD mask too much from the LCD covers when detaching the LCD mask.

2. Remove the LCD mask.

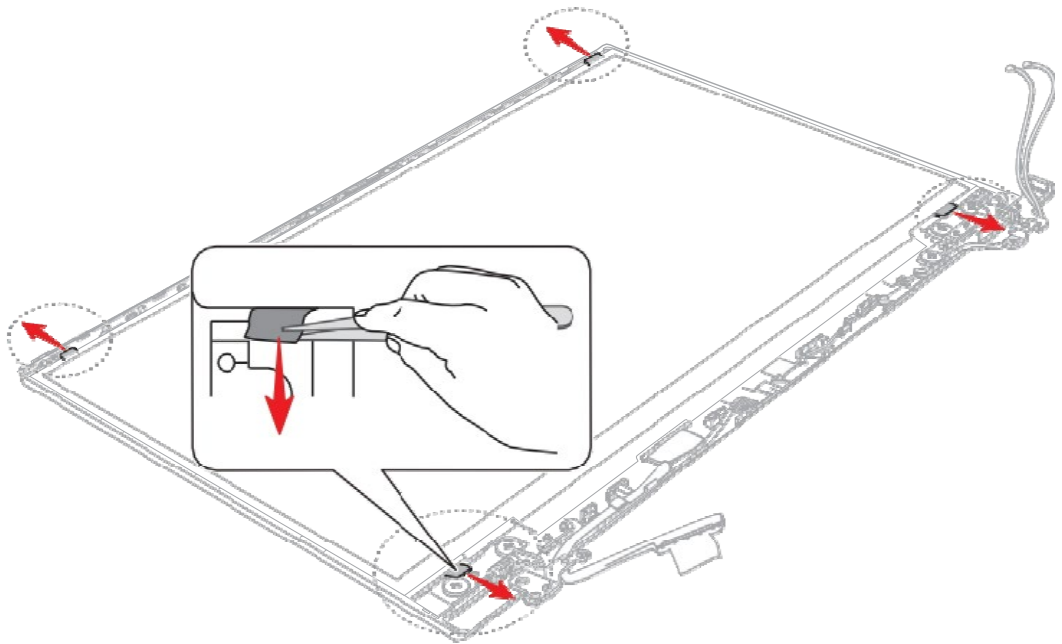


The Web Camera Shutter is attached to the LCD mask by magnet. Please be care not to lose it during removing the LCD mask.



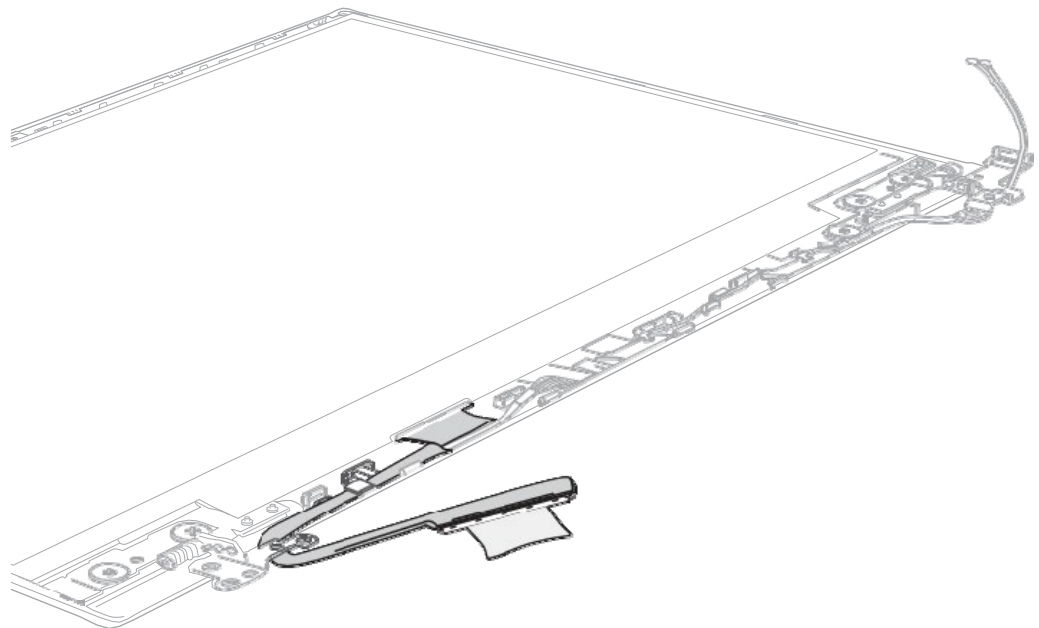
3. Release the LCD/Webcam harness from the guides on the LCD cover.
4. Grasp the bound & detach tapes and pull out the tapes slowly and parallelly from the LCD cover.

Figure 4-39 Removing the LCD unit (2)



5. Take out the LCD unit.
Be careful that the LCD/Webcam harness is connected to the connector on the back of the LCD unit.
6. Peel the pull tape and disconnect the LCD/Webcam harness from the connector on the LCD unit.

Figure 4-40 Removing the LCD unit (3)



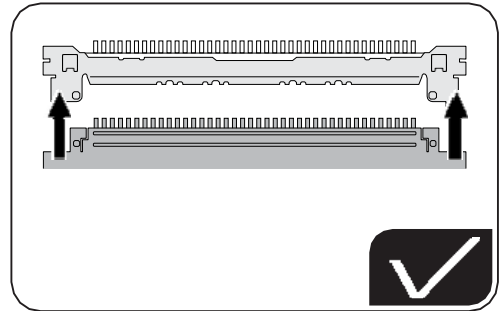
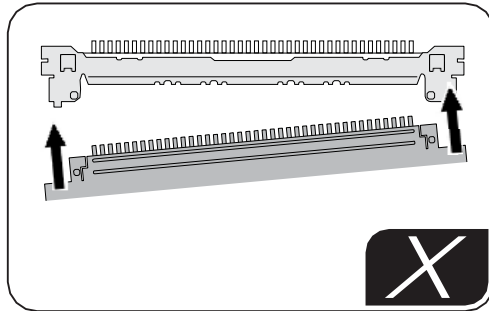
4.27.2 Installing the LCD unit

To install the LCD unit, follow the steps below.

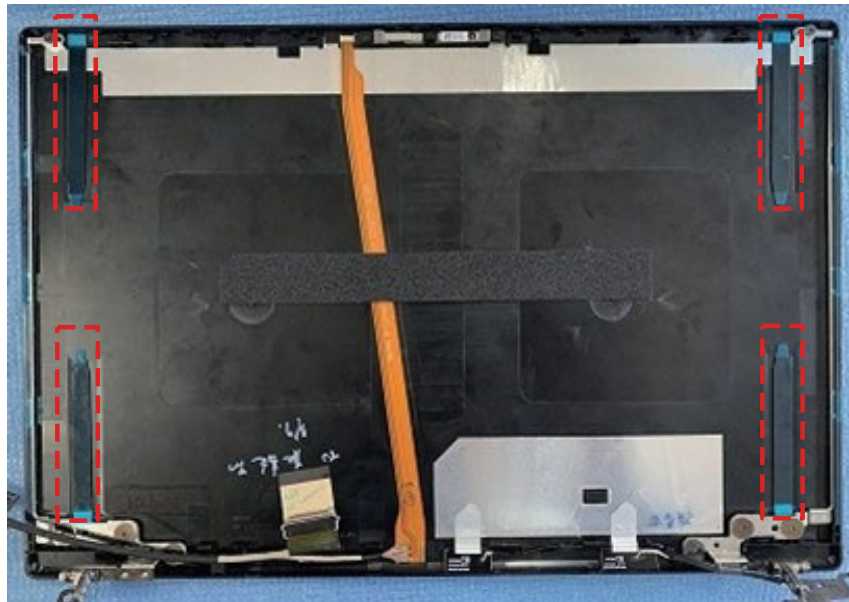
1. Connect the LCD/Webcam harness to the connector on the LCD unit and secure it with the pull tape and glass tape.



When connect the LCD harness, make sure to connect the right and left side at the same time as shown in the figure below.

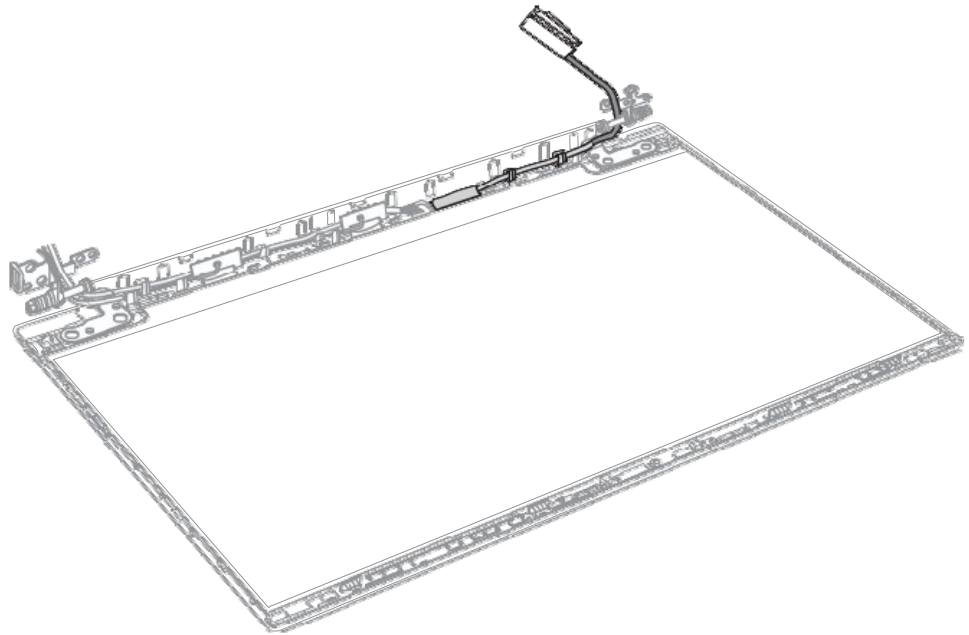


2. Peel off the separators on the bound & detach tapes on the LCD cover.
Figure 4-41 Installing the LCD unit (1)



3. Lift the separators a little away from the stick tapes on both left and right edge side of the LCD cover.
4. Set the LCD unit in place.
5. Arrange the LCD/Webcam harness under the guides of the LCD cover.

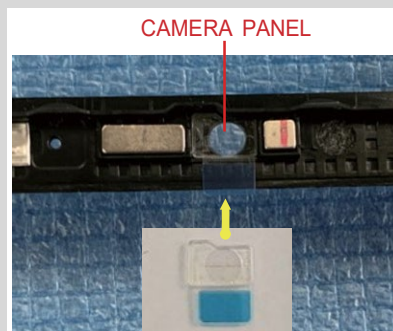
Figure 4-42 Installing the LCD unit (2)



6. Remove the separators on the bottom side of the LCD mask.

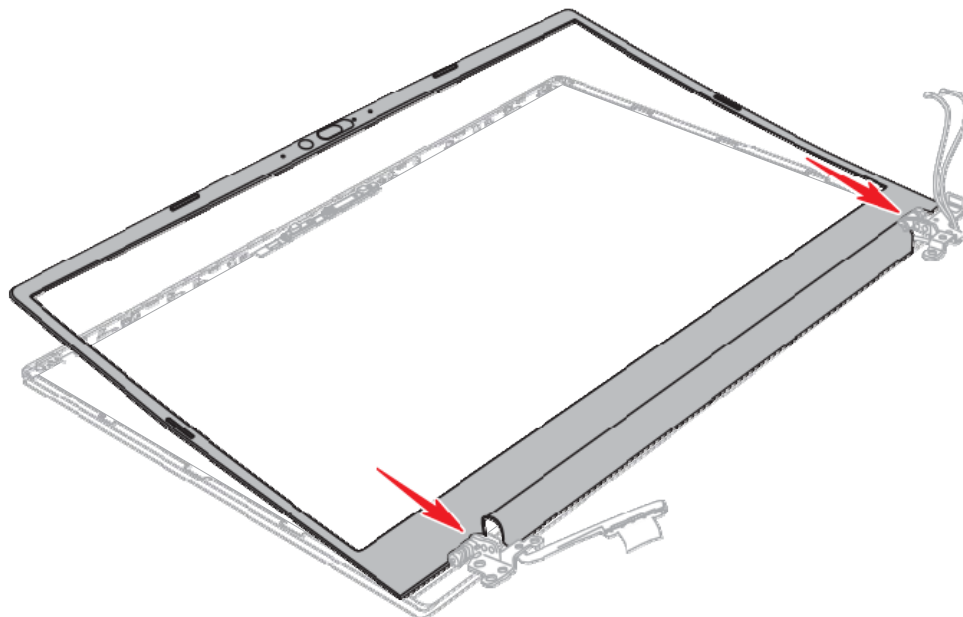


When replacing the LCD mask with a new one, Stick the **CAMERA PANEL** on the LCD mask in place and remove the separator on it.



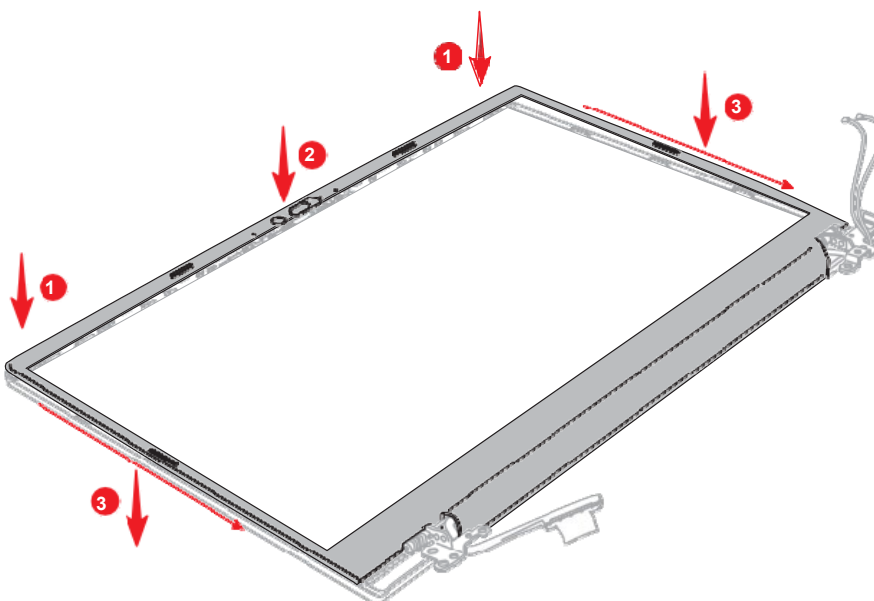
7. Align the LCD mask to the bottom side of the LCD cover first and engage the latches.

Figure 4-43 Installing the LCD unit (3)



8. Set the LCD mask on the LCD cover while engaging all the latches.

Figure 4-44 Installing the LCD unit (4)



4.28 Display hinges

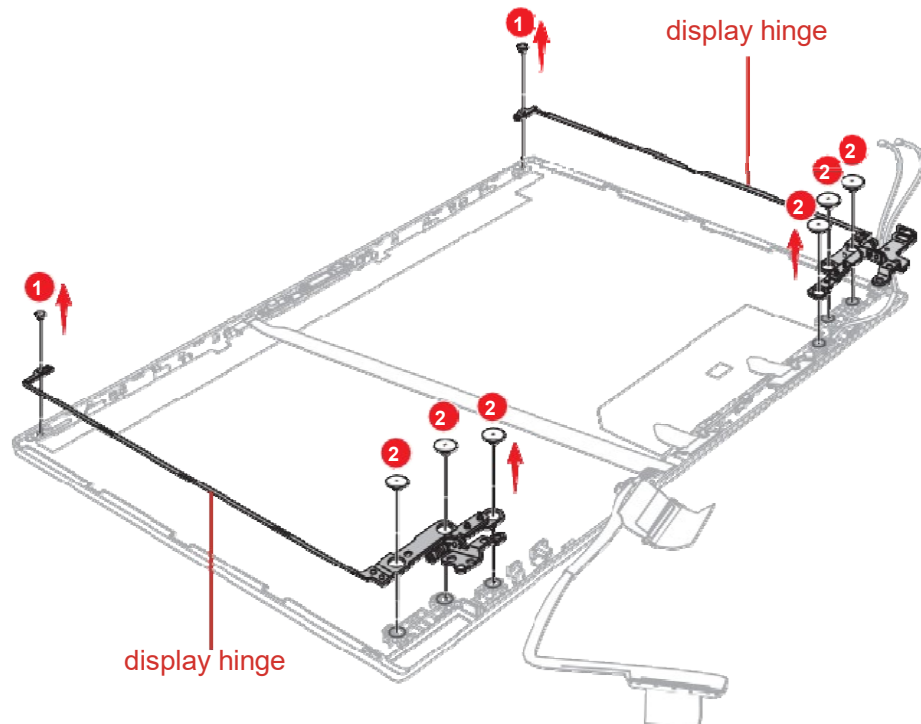
4.28.1 Removing the display hinges

To remove the display hinges, follow the steps below and refer to [Figure 4- 45](#).

1. Release the following screws and remove the left & right hinges.

■ S2x2.5BT	x2	(Described as "1" in the figure)
■ SH2.5x2.5BT	x6	(Described as "2" in the figure)

Figure 4-45 Removing the display hinges



4.28.2 Installing the display hinges

To install the display hinges, follow the steps below and refer to [Figure 4- 45](#).

1. Set the left & right hinges and secure them with the screws.

4.29 Wireless LAN antennas

4.29.1 Removing the Wireless LAN antennas

To remove the Wireless LAN antennas, follow the steps below.

1. Release the Wireless LAN antenna cables from the guides on the LCD cover.
2. Peel off the Wireless LAN antennas from the LCD cover.



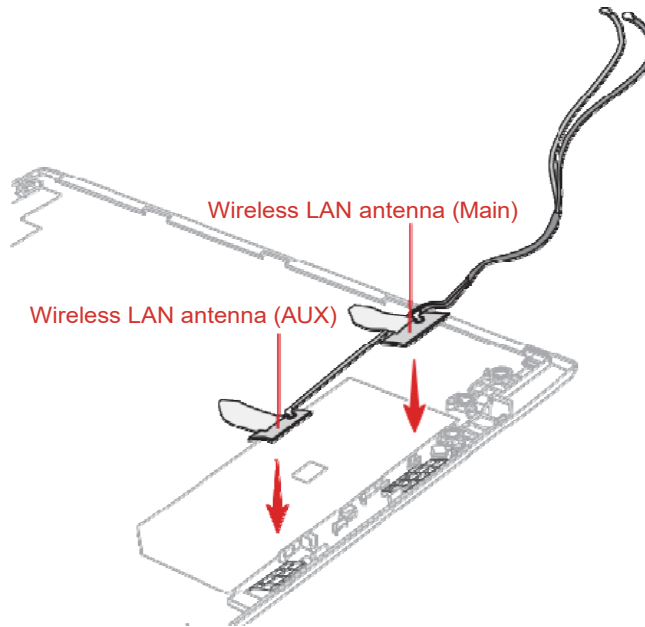
Do not reuse the removed wireless antennas. Be sure to use new wireless antenna.

4.29.2 Installing the Wireless LAN antennas

To install the Wireless LAN antennas, follow the steps below.

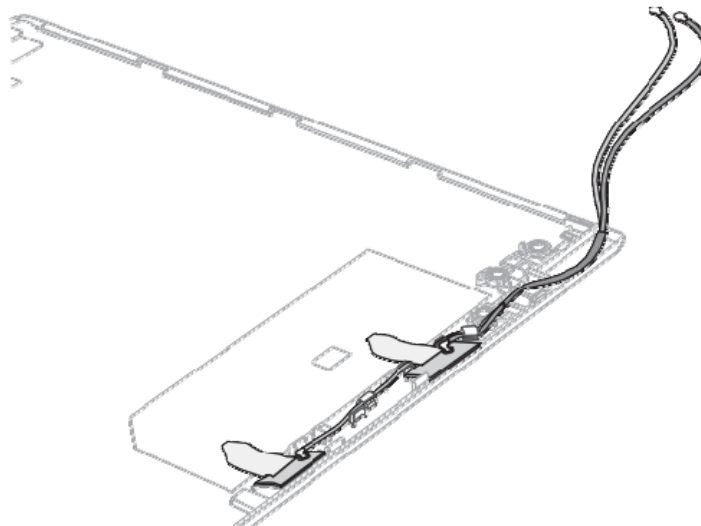
1. Stick new **Wireless LAN antennas (AUX/Main)** in place.

Figure 4-46 Sticking the Wireless LAN antennas



2. Arrange the **Wireless LAN antenna cables** in place as shown in below figure.

Figure 4-47 Arranging the Wireless LAN antenna cables



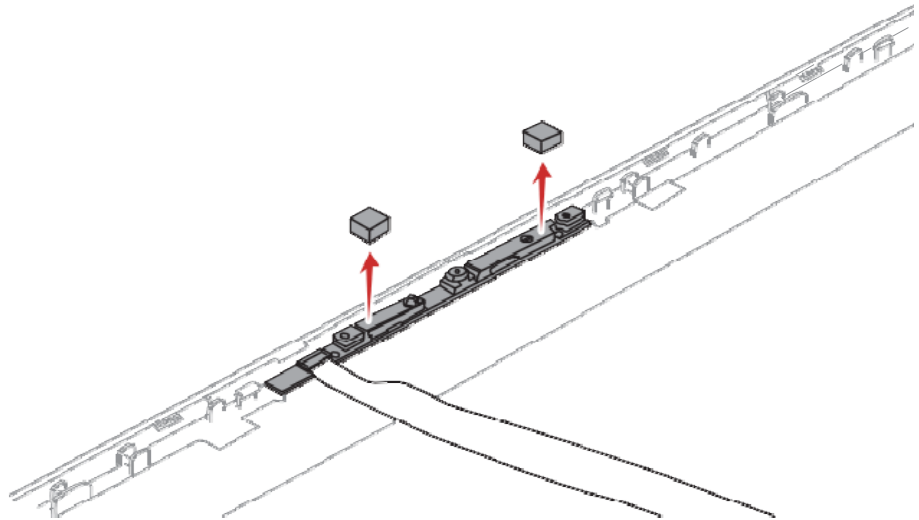
4.30 Camera module

4.30.1 Removing the Camera module

To remove the camera module, follow the steps below and refer to [Figure 4-48](#) to [Figure 4-50](#).

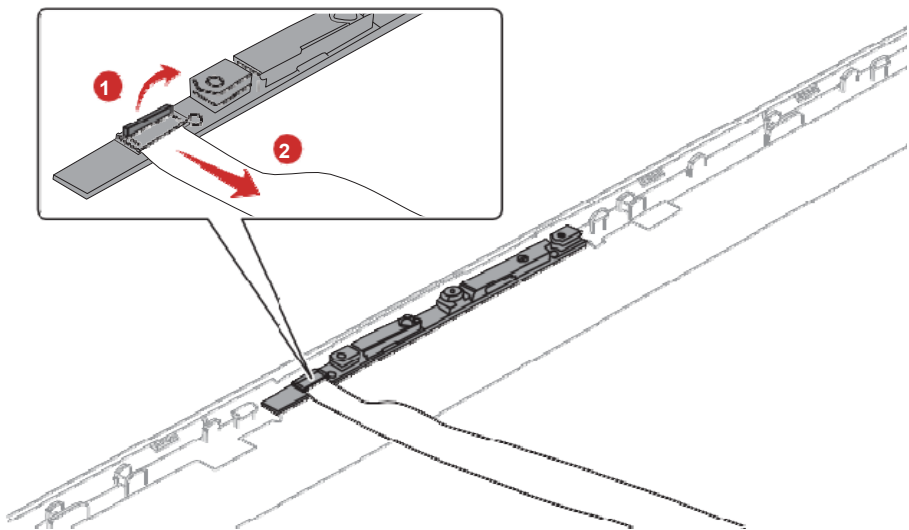
1. Remove two pieces of **GASKET** on the camera module.

Figure 4-48 Removing the camera module (1)



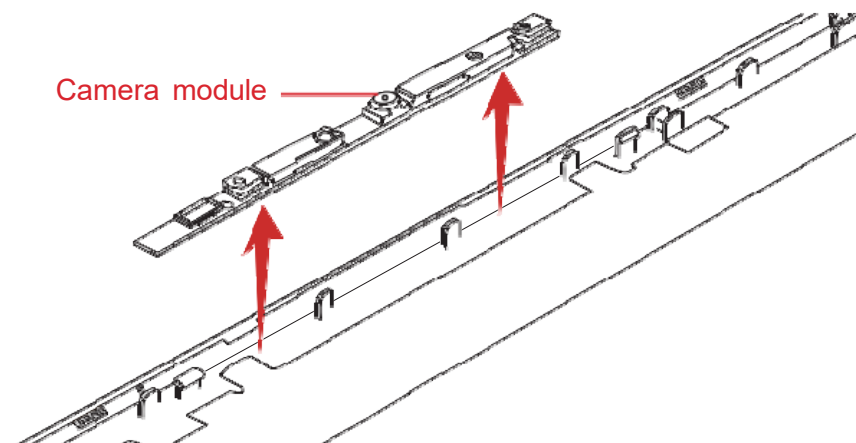
2. Disconnect the camera FPC from the connector on the camera module and peel off the FPC from the LCD cover.

Figure 4-49 Removing the camera module (2)



3. Peel off the **camera module** from the LCD cover.

Figure 4-50 Removing the camera module (3)





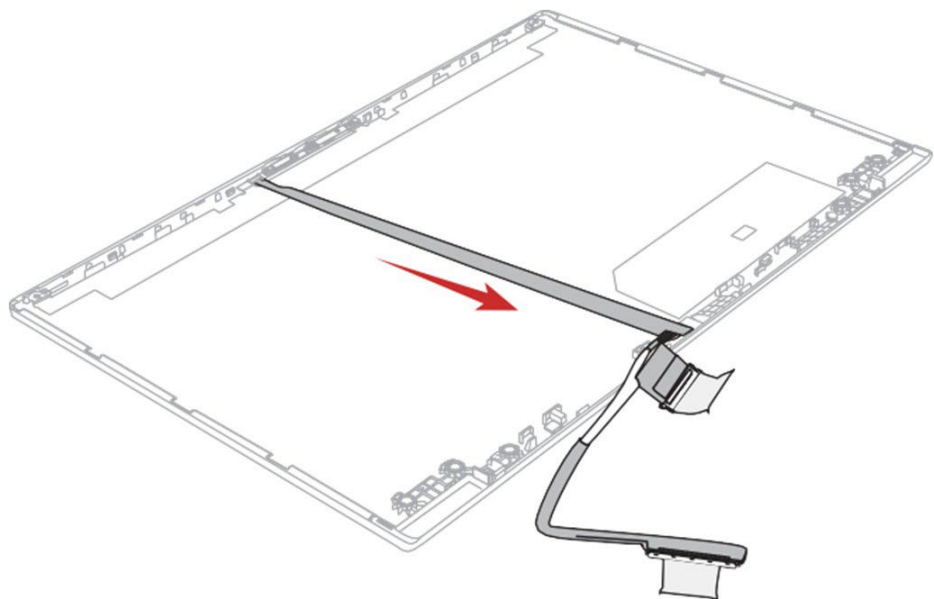
Do not reuse the removed camera module. Be sure to use new camera module.

4.30.2 Installing the Camera module

To install the camera module, follow the steps below and refer to [Figure 4-48](#) to [Figure 4-52](#).

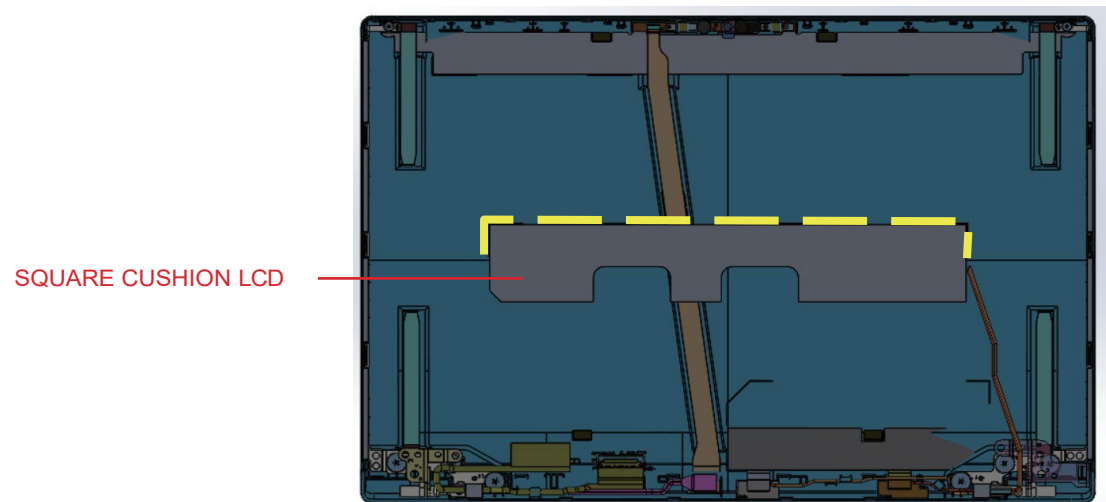
1. Peel off two protection sheets from the LCD cover.
2. Peel off the protection sheet from a new camera module and stick the **new camera module** to the LCD cover.
3. Stick two pieces of **GASKET** on the new camera module.
4. Connect the camera FPC to the connector on the camera module.
5. Peel off the separators on the camera FPC and stick the FPC to the LCD cover in place.

Figure 4-51 Installing the Camera module (1)



6. Stick the **SQUARE CUSHION LCD** to the LCD cover.

Figure 4-52 Installing the Camera module (2)



7. Arrange the LCD/Webcam harness to the guides on the LCD cover.

AC Adapter. External cables provided with the AC adapter and USB cables

The AC adapter as well as all external cables provided with the notebook including the AC adapter cables and USB cables should be segregated and sent for shredding.

The following components contained within the AC adapter potentially contain hazardous substances and require special handling:

- Printed Circuit Board >10 cm²
- Capacitor >25 mm in height

Photos of the AC adapter and the components noted above are included below. The notebook has one of two types of AC adapter.

USB connection type



AC adapter



AC Adapter with casing removed



AC Adapter printed circuit board

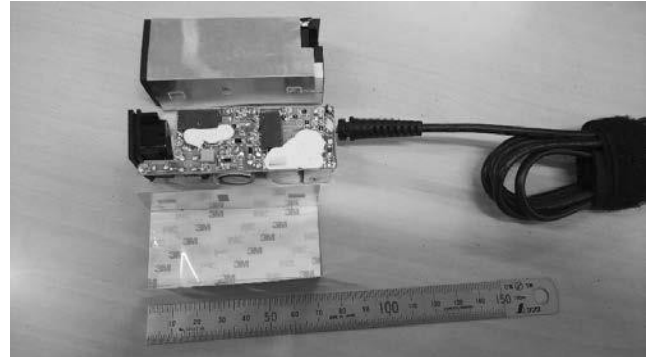


AC adapter capacitor

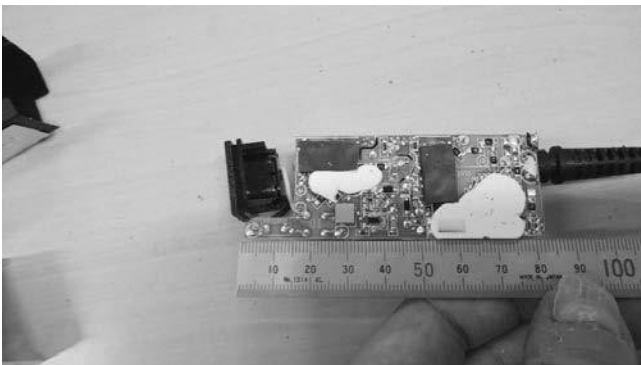
Conventional type



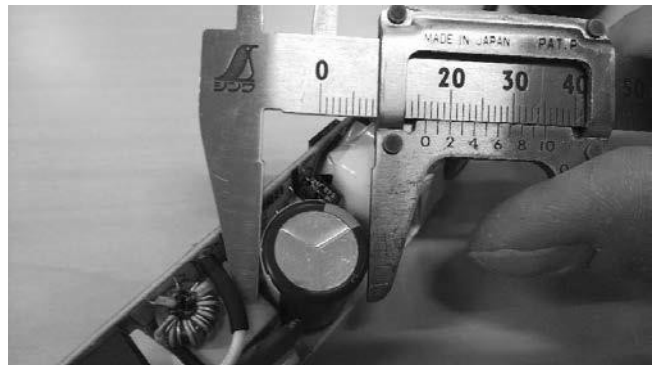
AC adapter



AC Adapter with casing removed



AC adapter printed circuit board



AC adapter capacitor