

Nov 23th, 2021

Dynabook Laptop Components Classified as Requiring Selective Treatment

Dynabook would like to communicate the method of identifying and removing components contained in Dynabook notebook products, including but not limited to the **Dynabook Satellite Pro L50-G/J** model, that requires selective treatment based on the European WEEE Directive, Directive 2012/19/EU of the European Parliament and of the Council on waste electrical and electronic equipment (WEEE).

All of the instructions provided within this letter can be reviewed in greater detail within the **Satellite Pro L50-G/J Series Maintenance Manual**.

Tools Required

In order to remove internal components of the **Satellite Pro L50-G/J** some tools from the list below may be required located in **Chapter 4 Replacement Procedures** of the **Dynabook Maintenance Manual**

- One 2 mm Phillips screwdriver
- One 4 mm flat-blade screwdriver
- Torx screwdriver
- Tweezers (for pulling out screws)
- ESD mats (for the floor and work desks)
- An ESD wrist strap or heel grounder
- Anti-static carpets or flooring
- Air ionizers (for highly electrostatic sensitive areas)
- A plastic card (in credit card size)

Table of Contents

- (Page 2-3) Removing the Lithium Ion Battery (Main Battery)
- (Page 4) Removing the SSD
- (Page 5) LCD, Printed Circuit / Wiring Boards (PCB/ PWB system board)
- (Page 5) Manual Replacement Procedures
- (Page 6) AC Adapter and external provide cables

1. Removing the Lithium Ion Battery (Main Battery)

Please refer to the information below for instructions regarding the identification and removal of the lithium ion battery. Further maintenance instructions can be found in section 4.5 of the **Satellite Pro L50-G/J Maintenance Manual**. Some tools are required in order to remove this component. Once removed, these components should be recycled as per local requirements.

To remove the battery, the base assembly must be removed first:

Remove nine M2.5x5.0 black Phillips head screws securing Base Enclosure.

Remove Base Enclosure.

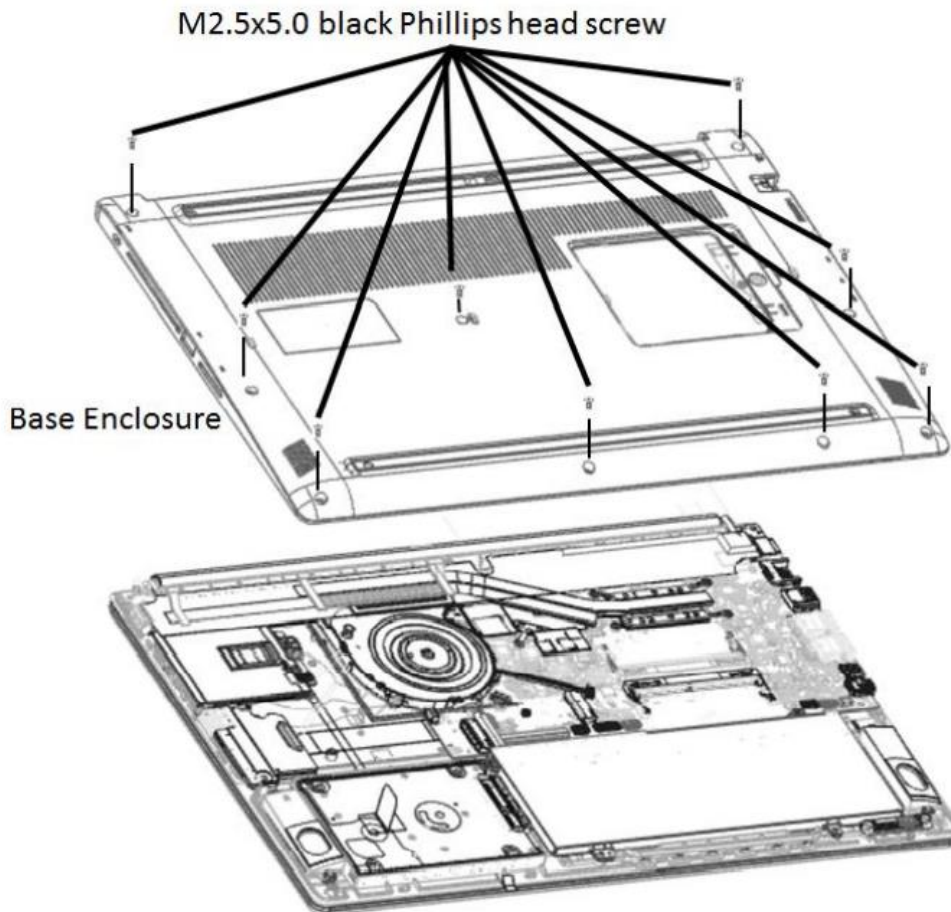


Figure 4-3 Removing Base Enclosure

Removing Battery Pack

Remove battery pack according to the following procedures and Figure 4-4.

CAUTION: When handling the battery packs, use care not to short circuit the terminals. Do not drop, hit, twist, or bend the battery packs. Do not scratch or break up their casing.

1. Disconnect Battery cable from CN6050 on system board.
2. Remove two M2.0x4.0 black Phillips head screws securing Battery.
3. Remove Battery.

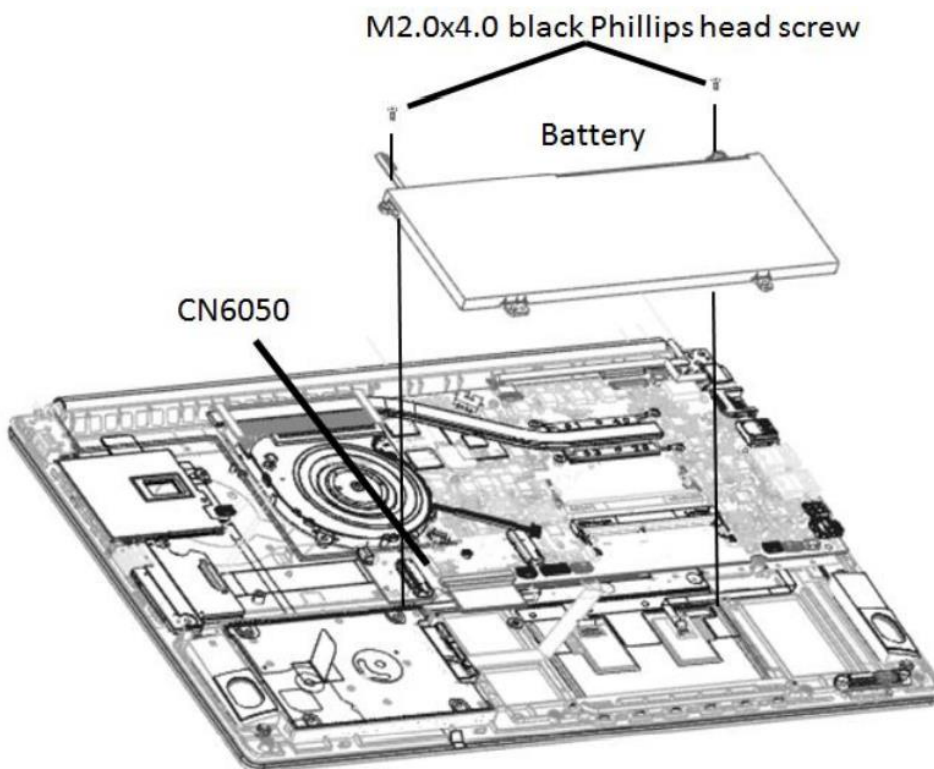


Figure 4-4 Removing battery pack

CAUTION: The battery packs contain a lithium ion battery, which can explode due to improper replacement, use, handling, or disposal. Always dispose of the battery packs as required by local ordinances or regulations. Use only replacement batteries recommended by Dynabook.

NOTE: Visually check the battery's terminals. If they are dirty, clean them with a dry cloth.

NOTE: Dispose of the used battery packs as required by local ordinances or regulations.

NOTE: Dispose of the used battery packs as required by local ordinances or regulations.

2. Removing the SSD

Please refer to the information below for instructions regarding the identification and removal of the SSD.

Please refer to the information listed in section 4.4 of the **Satellite Pro L50-G/J Series Maintenance Manual**.

One Philips screwdriver with type 1 bit will be required to remove the screws indicated in the locations below. Once removed, these components should be recycled as per local requirements.

Removing SSD

Remove SSD according to the following procedures and Figures 4-7.

CAUTION: Do not touch the connectors on SSD and in the computer with your bare hands. SSD can fail if they are contaminated with sweat, natural oils, etc. from your hands.

1. Remove one M2.0x2.0 black Phillips head screw securing the SSD.
2. Pull SSD from CN1951 on system board.

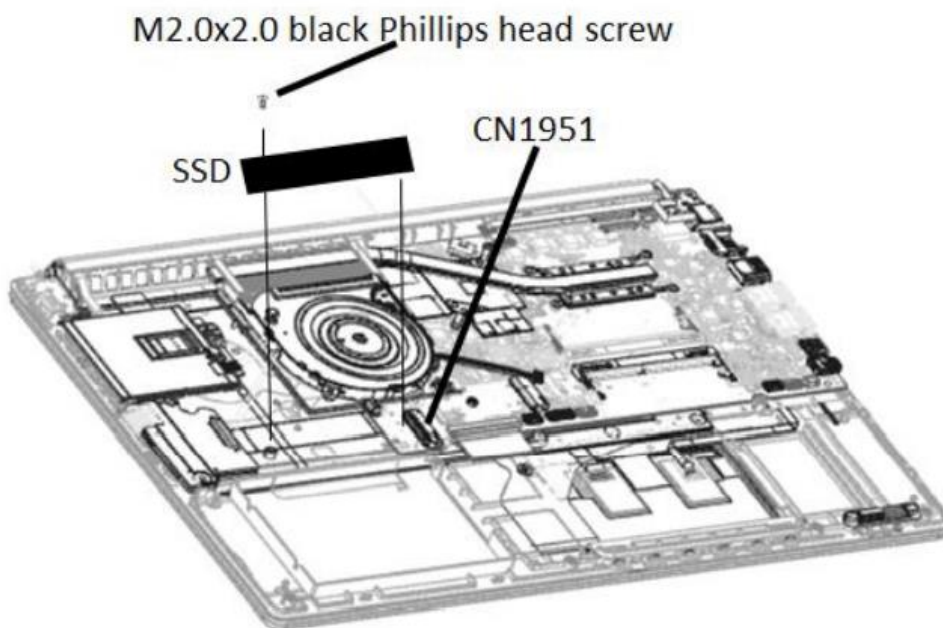


Figure 4-7 Removing SSD

3. Removing the LCD and Printed Circuit / Wiring Boards

Beside the LCD and the main PCB, there are further small PCBs and components which are in the scope of the WEEE Directive.

The removal of those components are described in detail in the chapter 4 of associate maintenance manual.

	Installing Wireless LAN Card	4-21
4.9	Smart Card Board	4-22
	Removing Smart Card Board	4-22
	Installing Smart Card Board	4-24
4.10	LCD Module Assembly	4-25
	Remove LCD Module Assembly	4-25
	Installing LCD Module Assembly	4-26
4.11	DC-IN harness	4-27
	Removing DC-IN harness	4-27
	Installing DC-IN harness	4-27
4.12	CPU Cooling Module and Fan	4-28
	Removing CPU Cooling Module and Fan	4-28
	Installing CPU Cooling Module and Fan	4-30
4.13	System Board	4-31
	Remove System Board	4-31
	Installing System Board	4-32
4.14	LED board and IO board	4-33
	Removing LED board and IO board	4-33
	Installing LED board and IO board	4-34
4.15	Speaker and Touch pad(or Security pad)	4-35
	Removing Speaker and Touch pad(or Security pad)	4-35
	Installing Speaker and Touch pad(or Security pad)	4-36
4.16	LCD Module Mask	4-37
	Removing LCD Module Mask	4-37
	Installing LCD Module Mask	4-37
4.17	LCD Panel	4-38
	Removing LCD Panel	4-38
	Installing LCD Panel	4-41
4.18	CCD Module	4-42
	Removing CCD Module	4-42
	Installing CCD Module	4-42

AC Adapter, External cables provided with the AC adapter and USB cables

Depending on your purchased model there are different AC adapters or cables supplied. Those parts should be recycled as per local requirements.

